

(43) International Publication Date  
20 January 2011 (20.01.2011)(10) International Publication Number  
**WO 2011/008092 A4**

## (51) International Patent Classification:

C07K 16/12 (2006.01) A61K 39/395 (2006.01)  
C12N 15/13 (2006.01) A61P 31/04 (2006.01)

## (21) International Application Number:

PCT/NL2010/050456

## (22) International Filing Date:

15 July 2010 (15.07.2010)

## (25) Filing Language:

English

## (26) Publication Language:

English

## (30) Priority Data:

61/225,878 15 July 2009 (15.07.2009) US  
09165558.9 15 July 2009 (15.07.2009) EP

(71) Applicants (for all designated States except US): AIMM THERAPEUTICS B.V. [NL/NL]; Meibergdreef 45, NL-1105 BA Amsterdam (NL). GENENTECH, INC. [US/US]; 1 DNA Way, South San Francisco, California 94080 (US).

## (72) Inventors; and

(75) Inventors/Applicants (for US only): BEAUMONT, Tim [NL/NL]; Hoger Amstellaan 27, NL-1191 GM Ouderkerk a/d Amstel (NL). KWAKKENBOS, Mark Jeroen [NL/NL]; Schollenbrugpad 32, NL-1091 ST Amsterdam (NL). BROWN, Eric J. [US/US]; 1921 Vallejo ST, San Francisco, California 94123 (US). MORISAKI, John Hiroshi [US/US]; 1200 Clayton Street, Unit 9, San Francisco, California 94114 (US). HAZENBOS, Wouter L.W. [NL/US]; 254 Molimo Drive, San Francisco, California

94127 (US). MARIATHASAN, Sanjeev [CA/US]; 1291 Encina Drive, Millbrae, California 94030 (US). KAJIHARA, Kimberly [US/US]; 795 33rd Avenue, San Francisco, California 94121 (US). XIA, Yi [US/US]; 19911 Lindenbrook Ln, Cupertino, California 95014 (US).

(81) Designated States (unless otherwise indicated, for every kind of national protection available): AE, AG, AL, AM, AO, AT, AU, AZ, BA, BB, BG, BH, BR, BW, BY, BZ, CA, CH, CL, CN, CO, CR, CU, CZ, DE, DK, DM, DO, DZ, EC, EE, EG, ES, FI, GB, GD, GE, GH, GM, GT, HN, HR, HU, ID, IL, IN, IS, JP, KE, KG, KM, KN, KP, KR, KZ, LA, LC, LK, LR, LS, LT, LU, LY, MA, MD, ME, MG, MK, MN, MW, MX, MY, MZ, NA, NG, NI, NO, NZ, OM, PE, PG, PH, PL, PT, RO, RS, RU, SC, SD, SE, SG, SK, SL, SM, ST, SV, SY, TH, TJ, TM, TN, TR, TT, TZ, UA, UG, US, UZ, VC, VN, ZA, ZM, ZW.

(84) Designated States (unless otherwise indicated, for every kind of regional protection available): ARIPO (BW, GH, GM, KE, LR, LS, MW, MZ, NA, SD, SL, SZ, TZ, UG, ZM, ZW), Eurasian (AM, AZ, BY, KG, KZ, MD, RU, TJ, TM), European (AL, AT, BE, BG, CH, CY, CZ, DE, DK, EE, ES, FI, FR, GB, GR, HR, HU, IE, IS, IT, LT, LU, LV, MC, MK, MT, NL, NO, PL, PT, RO, SE, SI, SK, SM, TR), OAPI (BF, BJ, CF, CG, CI, CM, GA, GN, GQ, GW, ML, MR, NE, SN, TD, TG).

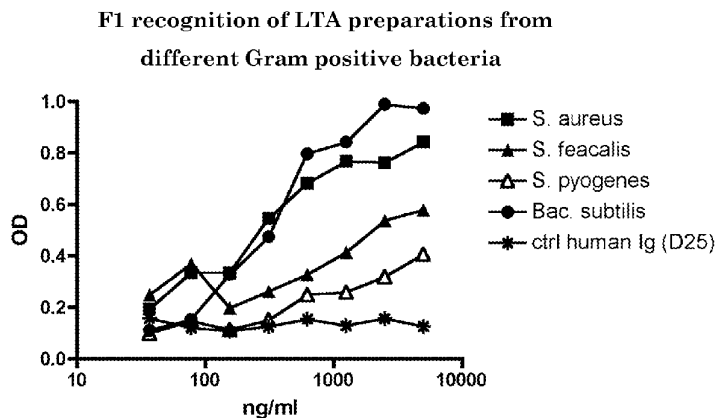
## Published:

- with international search report (Art. 21(3))
- with amended claims (Art. 19(1))

[Continued on next page]

## (54) Title: GRAM-POSITIVE BACTERIA SPECIFIC BINDING COMPOUNDS

Figure 2A



(57) Abstract: The present invention provides improved binding compounds capable of specifically binding Gram-positive bacteria. Binding compounds are provided that are fully human, enabling therapeutic applications in human individuals.



---

**(88) Date of publication of the international search report:**  
26 May 2011

**Date of publication of the amended claims:**

7 July 2011

Title: Gram-positive bacteria specific binding compounds

The invention relates to the fields of biology, immunology and medicine.

5

Gram-positive microorganisms cause the majority of systemic infections. One important member of these Gram-positive pathogens is *Staphylococcus aureus* (*S. aureus*). About 20% of the population is a long-term carrier of *S. aureus*. *S. aureus* can cause a range of illnesses from minor skin infections, such as pimples, impetigo (may also be caused by *Streptococcus pyogenes*), boils, cellulitis folliculitis, furuncles, carbuncles, scalded skin syndrome and abscesses, to life-threatening diseases such as pneumonia, meningitis, osteomyelitis, endocarditis, Toxic shock syndrome (TSS), and septicemia. *S. aureus* is capable of infecting all kinds of organs and tissues. *S. aureus* infections occur in immunocompetent as well as immune compromised people. About 10 50% of the infections in US intensive care units are caused by this pathogen. Three hundred thousand *S. aureus* infections per year, resulting in 12,000 deaths, are reported in the US (see also Moran et al. NEMJ 355, 666-674 (2006)).

A major problem is the increasing antibiotic resistance of *S. aureus*. Methicillin-resistant *S. aureus* (MRSA) emerged in the 1960s. It was initially 20 identified in health care settings. However, MRSA appears to be present among persons in the community which have not been hospitalized. Treatment of MRSA is difficult and expensive, due to the limited sensitivity of MRSA to antibiotics. However, very few alternatives of antibiotics are available. Vancomycin is often used to treat penicillin-resistant MRSA. US patent 6,939,543 describes a murine antibody 25 against lipoteichoic acid (LTA) which is capable of binding *S. aureus*. Based on this murine antibody, a recombinant chimeric mouse/human antibody was produced which contains human heavy and light chain constant domains. However, such chimeric mouse/human antibody has the disadvantage that murine sequences are present, which involves the risk of serious side effects when administered to humans.

30

It is an object of the present invention to provide means and methods for counteracting and/or preventing Gram-positive bacteria-related diseases. It is a further object of the invention to provide alternative and/or improved binding compounds against various Gram-positive bacteria, preferably *Staphylococcus* species,

more preferably MRSA. It is a further object of the invention to provide human binding compounds against various Gram-positive bacteria, preferably *Staphylococcus* species, more preferably MRSA.

5           The present invention provides antibodies, functional parts thereof or immunoglobulin chains or functional equivalents thereof capable of specifically binding *Staphylococcus* species in their natural context. Therefore, they are useful for counteracting and/or preventing and/or diagnosing disorders related to the presence of *Staphylococcus* species. Preferably, *S. aureus* is counteracted. In a particularly  
10 preferred embodiment, MRSA is counteracted. Another preferred *Staphylococcus* species which is counteracted is *Staphylococcus epidermidis*.

*Staphylococcus epidermidis* is usually non-pathogenic, but patients with a compromised immune system are often at risk for developing an infection. Infections can be both hospital and community acquired, but they are more of a threat to  
15 hospital patients. Most susceptible to infection with *S. epidermidis* are intravenous drug users, newborns, elderly, and those using catheters or other artificial appliances. Infections are associated with intravascular devices (prosthetic heart valves, shunts, etc.) but also commonly occur in prosthetic joints, catheters, and large wounds. Symptoms include fever, headache, fatigue, anorexia and dyspnea.

20           In a preferred embodiment, the present invention provides isolated or recombinant human antibodies, functional parts thereof or immunoglobulin chains or functional equivalents thereof capable of specifically binding *Staphylococcus* species. Human antibodies and functional parts according to the invention are capable of  
25 binding *Staphylococcus* species in its natural context, so that various *Staphylococcus* species are counteracted upon administration of said antibodies, functional parts thereof or immunoglobulin chains or functional equivalents thereof. Said human antibodies, functional parts thereof or immunoglobulin chains or functional  
30 equivalents thereof are therefore particularly suitable for treatment or prevention of infection by such *Staphylococcus* species. Said human antibodies, functional parts thereof or immunoglobulin chains or functional equivalents thereof according to the invention are more suitable for therapeutic and/or prophylactic use for human

individuals, as compared to chimeric antibodies, because of the absence of non-human sequences. This significantly reduces the risk of adverse side effects.

One particularly preferred antibody according to the present invention is the antibody designated "F1", which has heavy chain and light chain variable domain sequences as depicted in Figure 1. The term "F1" as used herein encompasses all F1 antibodies, for instance isolated or recombinantly produced F1. Recombinantly produced F1 is herein also called "rF1". The CDR sequences of F1, which in particular contribute to the antigen-binding properties of F1, are also depicted in Figure 1.

Antibody F1 is fully human, is capable of specifically binding *Staphylococcus* species such as *S. aureus* and *S. epidermidis* and is therefore preferred for therapeutic use for human individuals.

Importantly, antibody F1 is capable of binding whole bacteria *in vivo* as well as *in vitro*. Further provided is therefore an isolated or recombinant human antibody or a functional part thereof, which is capable of specifically binding *S. aureus* and/or *S. epidermidis*. Furthermore, antibody F1 is capable of binding to bacteria that have been grown in infected tissue of, for example, an animal. Provided is therefore an isolated antibody that binds to *in vivo*-grown *S. aureus*, wherein "*in vivo*-grown" is defined as grown in infected tissue of an animal during infection with *S. aureus*. Also provided is an isolated, recombinant or synthetic immunoglobulin chain or functional equivalent thereof comprising at least one CDR sequence of a human immunoglobulin variable region which is specific for *S. aureus* and/or *S. epidermidis*.

A functional part of an antibody is defined as a part which has at least one shared property as said antibody in kind, not necessarily in amount. Said functional part is capable of binding the same antigen as said antibody, albeit not necessarily to the same extent. A functional part of an antibody preferably comprises a single domain antibody, a single chain antibody, a nanobody, an unibody, a single chain variable fragment (scFv), a Fab fragment or a F(ab')<sub>2</sub> fragment.

A functional part of an antibody is also produced by altering an antibody such that at least one property - preferably an antigen-binding property - of the resulting compound is essentially the same in kind, not necessarily in amount. This is done in

many ways, for instance through conservative amino acid substitution, whereby an amino acid residue is substituted by another residue with generally similar properties (size, hydrophobicity, etc), such that the overall functioning is likely not to be seriously affected.

5

As is well known by the skilled person, a heavy chain of an antibody is the larger of the two types of chains making up an immunoglobulin molecule. A heavy chain comprises constant domains and a variable domain, which variable domain is involved in antigen binding. A light chain of an antibody is the smaller of the two  
10 types of chains making up an immunoglobulin molecule. A light chain comprises a constant domain and a variable domain. The variable domain is, together with the variable domain of the heavy chain, involved in antigen binding.

Complementary-determining regions (CDRs) are the hypervariable regions present in heavy chain variable domains and light chain variable domains. The CDRs  
15 of a heavy chain and the connected light chain of an antibody together form the antigen-binding site.

A functional equivalent of an immunoglobulin chain is defined herein as an artificial binding compound, comprising at least one CDR sequence of an immunoglobulin chain.

20

Now that the present invention provides the insight that the CDR sequences depicted in Figure 1 provide desired binding characteristics, a skilled person is well capable of generating variants comprising at least one altered CDR sequence. For instance, conservative amino acid substitution is applied. It is also possible to alter at  
25 least one CDR sequence depicted in Figure 1 in order to generate a variant antibody, or a functional part thereof, with at least one altered property as compared to F1. Preferably, an antibody or functional part is provided comprising a CDR sequence which is at least 70% identical to a CDR sequence as depicted in Figure 1, so that the favorable binding characteristics of F1 are at least in part maintained or even  
30 improved. A CDR sequence as depicted in Figure 1 is preferably altered such that the resulting antibody or functional part comprises at least one improved property, such as for instance an improved binding affinity, selectivity and/or stability, as compared to F1. Variant antibodies or functional parts thereof comprising an amino acid

sequence which is at least 70% identical to a CDR sequence as depicted in Figure 1 are therefore also within the scope of the present invention. Various methods are available in the art for altering an amino acid sequence. For instance, a heavy chain or light chain sequence with a desired CDR sequence is artificially synthesized.

- 5 Preferably, a nucleic acid sequence encoding a CDR sequence is mutated, for instance using random - or site-directed - mutagenesis.

In one embodiment the invention therefore provides an antibody or functional part thereof or immunoglobulin chain or functional equivalent thereof, which

10 comprises:

- a heavy chain CDR1 sequence comprising a sequence which has at least 70% sequence identity to the sequence RFAMS (SEQ ID NO:1), and/or
- a heavy chain CDR2 sequence comprising a sequence which has at least 70% sequence identity to the sequence SINNGNNPYYARSVQY (SEQ ID NO:2), and/or
- 15 - a heavy chain CDR3 sequence comprising a sequence which has at least 70% sequence identity to the sequence DHPSSGWPTFDS (SEQ ID NO:3).

Further provided is an antibody or functional part thereof or immunoglobulin chain or functional equivalent thereof, which comprises:

- 20 - a light chain CDR1 sequence comprising a sequence which has at least 70% sequence identity to the sequence RASENVGDWLA (SEQ ID NO:4), and/or
- a light chain CDR2 sequence comprising a sequence which has at least 70% sequence identity to the sequence KTSILES (SEQ ID NO:5), and/or
- a light chain CDR3 sequence comprising a sequence which has at least 70%
- 25 sequence identity to the sequence QHYXRFPYT, wherein X is I or M (SEQ ID NO:6).

The above mentioned CDR sequences are the CDR sequences of antibody F1; VH IgHV3-23 and VL IgKV1-5, and variants thereof. Binding compounds comprising CDR sequences with at least 70% sequence identity to F1 CDRs are particularly

30 suitable for counteracting and/or preventing (the effects of) infections by *S.aureus* and/or *S. epidermidis*. It was found that a variant of F1, comprising VH IgHV3-23 and VL IgKV1-5, in which the isoleucine in light chain CDR3 of the light chain was

altered to a methionine, was still capable of specifically binding *Staphylococcus* species such as *S. aureus* and *S. epidermidis*.

Preferably, a binding compound according to the invention comprises a CDR  
5 sequence which is at least 75%, more preferably at least 80%, more preferably at least 85%, more preferably at least 86%, more preferably at least 87%, more preferably at least 88%, more preferably at least 89%, more preferably at least 90% identical to at least one of the CDR sequences depicted in Figure 1. Most preferably, a binding compound according to the invention comprises a CDR sequence which is at least  
10 91%, more preferably at least 92%, more preferably at least 93%, more preferably at least 94%, more preferably at least 95% identical to at least one of the CDR sequences depicted in Figure 1. The particularly preferred antibody F1, described above, comprises CDR sequences which consist of the CDR sequences depicted in Figure 1. A particularly preferred embodiment according to the invention thus provides an  
15 isolated, synthetic or recombinant antibody or a functional equivalent thereof which is capable of specifically binding *S.aureus* and/or *S. epidermidis* and which comprises:  
- a heavy chain CDR1 sequence comprising the sequence RFAMS (SEQ ID NO:1),  
and/or  
- a heavy chain CDR2 sequence comprising the sequence SINNGNNPYYARSVQY  
20 (SEQ ID NO:2), and/or  
- a heavy chain CDR3 sequence comprising the sequence DHPSSGWPTFDS (SEQ ID NO:3), and/or  
- a light chain CDR1 sequence comprising the sequence RASENVGDWLA (SEQ ID NO:4), and/or  
25 - a light chain CDR2 sequence comprising the sequence KTSILES (SEQ ID NO:5),  
and/or  
- a light chain CDR3 sequence comprising the sequence QHYXRFPYT, wherein X is I or M (SEQ ID NO:6).

In one embodiment a binding compound is provided which comprises the heavy  
30 chain CDR1 and CDR2 sequences and the light chain CDR1 and CDR2 sequences as depicted in Figure 1, or sequences that are at least 70%, preferably at least 75%, more preferably at least 80%, more preferably at least 81%, more preferably at least 82%, more preferably at least 83%, more preferably at least 84%, more preferably at least



85% identical thereto. Further provided is therefore an isolated, synthetic or recombinant antibody or a functional part thereof or an immunoglobulin chain or a functional equivalent thereof which comprises a heavy chain CDR1 sequence comprising a sequence which is at least 70% identical to the sequence RFAMS (SEQ ID NO:1) and a heavy chain CDR2 sequence comprising a sequence which is at least 70% identical to the sequence SINNGNNPYYARSVQY (SEQ ID NO:2) and a light chain CDR1 sequence comprising a sequence which is at least 70% identical to the sequence RASENVGDWLA (SEQ ID NO:4) and a light chain CDR2 sequence comprising a sequence which is at least 70% identical to the sequence KTSILES (SEQ ID NO:5). Said binding compound preferably comprises CDR sequences which are at least 75%, more preferably at least 80%, more preferably at least 85%, more preferably at least 86%, more preferably at least 87%, more preferably at least 88%, more preferably at least 89%, more preferably at least 90%, more preferably at least 91%, more preferably at least 92%, more preferably at least 93%, more preferably at least 94%, most preferably at least 95% identical to the above mentioned heavy chain CDR sequences and light chain CDR sequences. Preferably, said binding compound also comprises a heavy chain CDR3 sequence comprising a sequence which is at least 70% identical to the sequence DHPSSGWPTFDS (SEQ ID NO:3), and/or a light chain CDR3 sequence comprising a sequence which is at least 70% identical to the sequence QHYXRFPYT, wherein X is I or M (SEQ ID NO:6). A binding compound comprising the above mentioned heavy chain CDR1, CDR2 and CDR3 sequences as well as the above mentioned light chain CDR1, CDR2 and CDR3 sequences is also provided.

Now that a human antibody capable of specifically binding *Staphylococcus* species has been provided by the present invention, it has become possible to produce an immunoglobulin chain or functional equivalent thereof comprising at least one CDR sequence of a human immunoglobulin variable domain which is specific for *Staphylococcus* species. Further provided is thus an isolated, recombinant or synthetic immunoglobulin chain or functional equivalent thereof comprising at least one CDR sequence of a human immunoglobulin variable region which is specific for *Staphylococcus* species. In a preferred embodiment, a human antibody is provided. Optionally, said at least one human CDR sequence or at least one sequence in at least one of the framework regions is optimized, preferably in order to improve binding

efficacy or stability. This is for instance done by mutagenesis experiments where after the stability and/or binding efficacy of the resulting compounds are preferably tested and an improved binding compound is selected.

5            Besides optimizing CDR sequences in order to improve binding efficacy or stability, it is often advantageous to optimize at least one sequence in at least one of the framework regions. This is preferably done in order to improve binding efficacy or stability. Framework sequences are for instance optimized by mutating a nucleic acid molecule encoding such framework sequence where after the characteristics of the  
10        resulting antibody – or functional part – are preferably tested. This way, it is possible to obtain improved antibodies or functional parts. In a preferred embodiment, human germline sequences are used for framework regions in antibodies or functional parts thereof or immunoglobulin chains or functional equivalents according to the invention. The use of germline sequences preferably minimizes the risk of  
15        immunogenicity of said antibodies, immunoglobulin chains or functional equivalents or parts, because these sequences are less likely to contain somatic alterations which are unique to individuals from which the framework regions are derived, and may cause an immunogenic response when applied to another human individual.

             Antibodies or functional parts thereof or immunoglobulin chains or functional  
20        equivalents thereof comprising a heavy chain amino acid sequence which has at least 70% sequence identity to the heavy chain sequence as depicted in Figure 1 are also provided. Such heavy chain sequence provides desired binding properties, as evidenced by antibody F1. Moreover, light chain amino acid sequences which have at least 70% sequence identity to the light chain sequence as depicted in Figure 1, and a  
25        light chain sequence in which an isoleucine in CDR3 is altered to methionine, also provide desired binding properties, as evidenced by antibody F1, and a variant of antibody F1 comprising said alteration. Further provided is therefore an antibody or functional part or immunoglobulin chain or functional equivalent according to the invention, having a heavy chain sequence comprising a sequence which has at least  
30        70% sequence identity to the sequence

EVQLLESGGGLVQPGGSLRLSCAASGFTLSRFAMSWVRQAPGRGLEWVASINNGN  
NPYYARSVQYRFTVSRDVSQNTVSLQMNNLRAEDSATYFCAKDHPSGWPFTFDS  
WGPGTLVTVSS (SEQ ID NO:7) and/or having a light chain sequence which has at

least 70% sequence identity to the sequence

DIQLTQSPSALPASVGDRVSITCRASENVGDWLA WYRQKPGKAPNLLIYKTSILESG  
VPSRFSGSGSGTEFTLTISLQPD DFATYYCQHYXRF PYTFGQGTKLEIKRTV,  
wherein in X is I or M (SEQ ID NO:8).

- 5           Several variants of the F1 antibody have been developed, besides the variant indicated herein above in which an isoleucine in light chain CDR3 is altered to methionine. These variants are capable of binding to *Staphylococcus* species. Examples of such antibody variants include antibodies or functional parts or immunoglobulin chains or functional equivalents according to the invention, having a
- 10 heavy chain sequence comprising the sequence  
EVQLVESGGGLVQPGGSLRLSCAASGFTLSRFAMSWVRQAPGRGLEWVASINNGN  
NPYYARSVQYRFTVSRDVSQNTVSLQMNNLRAEDSATYFCAK DHPSSGWPTFDS  
WGPGTLVTVSS (SEQ ID NO:9), and/or the sequence  
EVQLLES GGGLVQPGGSLRLSCAASGFTLSRFAMSWVRQAPGRGLEWVASINNGN  
15 NPYYARSVQYRFTVSRDVSQNTVSLQMNNLRAEDSATYFCAK DHPSSGWPTFDS  
WGPGTLVTVSS (SEQ ID NO:7), and a light chain sequence comprising the sequence  
DIQLTQSPSALPASVGDRVSITCRASENVGDWLA WYRQKPGKAPNLLIYKTSILESG  
VPSRFSGSGSGTEFTLTISLQPD DFATYYCQHYXRF PYTFGQGTKLEIKRA,  
wherein X is I of M (SEQ ID NO:10), and/or the sequence  
20 DIQLTQSPSALPASVGDRVSITCRASENVGDWLA WYRQKPGKAPNLLIYKTSILESG  
VPSRFSGSGSGTEFTLTISLQPD DFATYYCQHYXRF PYTFGQGTKVEIKRTV,  
wherein X is I of M (SEQ ID NO:11), and/or the sequence  
DIQLTQSPSALPASVGDRVSITCRASENVGDWLA WYRQKPGKAPNLLIYKTSILESG  
VPSRFSGSGSGTEFTLTISLQPD DFATYYCQHYXRF PYTFGQGTKLEIKRTV,  
25 wherein X is I of M (SEQ ID NO:8).

- An antibody or functional part or immunoglobulin chain or functional equivalent thereof according to the invention specifically binds to proteins comprising a serine-aspartate (SD) repeat. SD repeat (Sdr) proteins are cell-surface-associated
- 30 proteins that are present in several bacteria such as *Staphylococcus* species. Sdr proteins in general comprise an amino-terminal signal sequence, a functional domain called the A region, an SD repeat region, a cell wall-spanning region, a LPXTG motif, a hydrophobic membrane-spanning domain, and a series of positively charged

residues. The LPXTC motif is the target of a transpeptidase that cleaves the motif between threonine and glycine residues and anchors the protein to the peptidoglycan of the cell wall of gram-positive bacteria. Sdr proteins are thought to interact with host molecules. Known Sdr proteins include ClfA (SdrA), ClfB (SdrB), SdrC, SdrD and  
5 SdrE of *S. aureus*, SdrF, SdrG and SdrH of *S. epidermidis*, SdrI of *S. saprophyticus*, SdrX of *S. capitis*, and SdrY and SdrZ of *S. caprae*.

Therefore, a preferred antibody or functional part thereof or immunoglobulin chain or functional equivalent according to the invention specifically binds *S. aureus*, *S. epidermidis*, *S. saprophyticus*, *S. capitis*, and *S. caprae*. It is preferred that said  
10 antibody, immunoglobulin chain or functional equivalent or part thereof binds to ClfA (SdrA), ClfB (SdrB), SdrC, SdrD and SdrE of *S. aureus*, SdrF, SdrG and SdrH of *S. epidermidis*, SdrI of *S. saprophyticus*, SdrX of *S. capitis*, and SdrY and SdrZ of *S. caprae*. The epitope of the antibody, immunoglobulin chain or functional equivalent or part thereof according to the invention comprises an SD repeat-dependent epitope in  
15 Sdr proteins, for instance SD repeat-dependent epitopes as present in *S. aureus* ClfA, ClfB, SdrC, SdrD and SdrE. An SD repeat-dependent epitope is herein defined as an epitope recognized by antibody F1, which epitope require the presence of at least part of an SD repeat region as present in, but not limited to, *S. aureus* ClfA, ClfB, SdrC, SdrD and SdrE and *S. epidermidis* SdrF, SdrG and SdrH. In one embodiment said  
20 epitope may comprise at least part of a molecule that binds to, or is associated with an Sdr protein. Examples of such molecules include, but are not limited to, amino acids, peptides, proteins, sugars and sugar residues. In another embodiment, said epitope comprises modifications of the SD repeat region. Said modifications comprise, for example, but are not limited to, glycosylation, amidation and/or phosphorylation. It  
25 will be clear to a skilled person that combination of these two embodiments is also possible.

Therefore, the invention provides an antibody or functional part or immunoglobulin chain or functional equivalent according to the invention capable of binding an SD repeat-dependent epitope. Also provided is an antibody or functional  
30 part or immunoglobulin chain or functional equivalent capable of binding to *S. aureus* ClfA, ClfB, SdrC, SdrD and SdrE. Further provided is an antibody or functional part or immunoglobulin chain or functional equivalent which is capable of competing with an antibody or functional part or immunoglobulin chain or functional equivalent

according to the present invention for binding to a *Staphylococcus* species, preferably *S. aureus* and/or *S. epidermidis* and/or *S. saprophyticus* and/or *S. capitis* and/or *S. caprae*, more preferably MRSA.

5           A disadvantage of antibodies is that their stability may be reduced, for example under harsh conditions. For instance deamidation, the removal of a functional amide group, may occur. Deamidation is a protein degradation pathway that may affect the biological functions of proteins, and which occurs mainly at asparagine residues, and to a lower extent at glutamine residues. In one embodiment, therefore, deamidation of an antibody or functional part thereof or immunoglobulin chain or functional equivalent thereof according to the invention is prevented by replacing an asparagine or glutamine by another amino acid. An asparagine is preferably replaced by an amino acid other than glutamine, because deamidation may also occur at a glutamine residue. Replacement of an asparagine preferably does not substantially affect binding affinity of an antibody according to the invention to an antigen. In one embodiment deamidation of an asparagine at position 53 of the heavy chain (numbering according to Kabat, 1991) is prevented by replacing said asparagine by another amino acid. By preventing deamidation of an asparagine at position 53 the stability of an antibody or functional part thereof or immunoglobulin chain or functional equivalent thereof according to the invention is preferably increased. As is shown in the examples, despite the fact that said asparagine is located in a CDR, replacing an asparagine at said position does not substantially affect the binding affinity for an antigen of an antibody or functional part thereof or immunoglobulin chain or functional equivalent thereof according to the invention. An asparagine at position 53 of the heavy chain is preferably replaced by an amino acid other than glutamine, more preferably an asparagine at said position is replaced by serine. Therefore, also provided by the invention is therefore an antibody or functional part or immunoglobulin chain or functional equivalent according to the invention, wherein an asparagine, preferably an asparagine at position 53 of the heavy chain, is replaced by another amino acid, preferably serine.

In one embodiment, an antibody or functional part thereof or immunoglobulin chain or functional equivalent thereof according to the invention is coupled to another

moiety to form antibody-drug conjugates. An antibody or functional part thereof or immunoglobulin chain or functional equivalent thereof according to the invention is for instance coupled to a cytotoxic agent, such as an antibiotic. The term "cytotoxic agent" as used herein refers to a substance that reduces or blocks the function, or growth, of bacteria and/or causes destruction of bacteria. Said other moiety, for example a cytotoxic agent, is preferably coupled to said antibody or functional part thereof through a thiol group. Therefore, preferably one or more cysteines are incorporated into said antibody or functional part thereof or immunoglobulin chain or functional equivalent thereof. Cysteines contain a thiol group and therefore, incorporation of one or more cysteines into, or replacement of one or more amino acids by one or more cysteines of an antibody or functional part thereof according to the invention enable coupling thereof to another moiety. Said one or more cysteines are preferably introduced into an antibody or functional equivalent thereof according to the invention at a position where it does not influence folding of said antibody or functional equivalent, and does not alter antigen binding or effector function. The invention therefore provides an antibody or functional part thereof or immunoglobulin chain or functional equivalent thereof according to the invention wherein at least one amino acid other than cysteine has been replaced by a cysteine. Preferably at least two amino acids other than cysteine have been replaced by cysteine. In a preferred embodiment, said at least one amino acid other than cysteine is valine at light chain position 15, and/or alanine at light chain position 144, and/or serine at light chain position 168, and/or valine at light chain position 205 and/or valine at light chain position 110, and/or alanine at heavy chain position 84, and/or alanine at heavy chain position 114, and/or alanine at heavy chain position 168, and/or serine at heavy chain position 172, more preferably valine at light chain position 205 and/or valine at light chain position 110, and/or alanine at heavy chain position 114 (numbering according to Kabat, 1991). A skilled person will understand that, as an alternative or in addition, one or more other amino acids of the heavy and/or light chain can be replaced by cysteine if the replacement does not influence folding of said antibody or functional equivalent, and does not alter antigen binding or effector function.

In international patent applications WO2006/034488, WO2008/141044, WO2009/052249, WO2009/012256, WO2009/012268 and WO2009/099728 methods for

engineering antibodies with reactive cysteine residues are described as well as amino acid positions suitable for cysteine engineering.

An antibody or functional part or immunoglobulin chain or functional  
5 equivalent according to the invention preferably comprises a variable heavy chain sequence and/or a variable light chain sequence which is at least 75%, more preferably at least 80%, more preferably at least 85%, more preferably at least 90%, most preferably at least 95% identical to a heavy chain sequence and/or the light chain sequence as depicted in Figure 1, or a light chain sequence as depicted in Figure  
10 1 in which the isoleucine in CDR3 is altered to a methionine. The higher the identity, the more closely said binding compound resembles antibody F1. An antibody or functional part or immunoglobulin chain or functional equivalent according to the invention preferably comprises a heavy chain as well as a light chain which resemble the heavy and light chain of F1. Further provided is therefore an antibody or  
15 functional part thereof or immunoglobulin chain or functional equivalent thereof comprising a heavy chain sequence and a light chain sequence which are at least 70%, more preferably at least 80%, more preferably at least 85%, more preferably at least 90%, most preferably at least 95% identical to the heavy chain sequence and the light chain sequence as depicted in Figure 1, or a light chain sequence as depicted in Figure  
20 1 in which the isoleucine in CDR3 is altered to a methionine. In one embodiment an antibody or functional part is provided which has a heavy chain sequence as depicted in Figure 1 and a light chain sequence as depicted in Figure 1 or a light chain sequence as depicted in Figure 1 in which the isoleucine in CDR3 is altered to a methionine.

25

One embodiment provides an antibody or functional part thereof or immunoglobulin chain or functional equivalent thereof comprising a heavy chain sequence consisting of the heavy chain sequence as depicted in Figure 1, and/or comprising a light chain sequence consisting of the light chain sequence as depicted in  
30 Figure 1 or a light chain sequence as depicted in Figure 1 in which the isoleucine in CDR3 is altered to a methionine. Alternatively, as is well known by the skilled person, it is possible to generate a shortened heavy chain or light chain sequence while maintaining a binding property of interest. Preferably, such a shortened heavy chain

or light chain is generated which has a shorter constant region, as compared to the original heavy or light chain. The variable domain is preferably maintained. For instance, a Fab fragment or F(ab')<sub>2</sub> fragment or a single domain antibody or a single chain antibody or a nanobody or an unibody or a scFv fragment based on a heavy chain sequence or light chain sequence depicted in Figure 1 is produced. A functional part of an antibody comprising at least a functional part of a sequence as depicted in Figure 1, or a light chain sequence as depicted in Figure 1 in which the isoleucine in CDR3 is altered to a methionine, is therefore also provided. Said functional part has a length of at least 20 amino acids and comprises at least one sequence selected from the group consisting of a sequence which is at least 70% identical to the heavy chain CDR1 sequence depicted in Figure 1 and a sequence which is at least 70% identical to the heavy chain CDR2 sequence depicted in Figure 1 and a sequence which is at least 70% identical to the heavy chain CDR3 sequence depicted in Figure 1 and a sequence which is at least 70% identical to the light chain CDR1 sequence depicted in Figure 1 and a sequence which is at least 70% identical to the light chain CDR2 sequence depicted in Figure 1 and a sequence which is at least 70% identical to the light chain CDR3 sequence depicted in Figure 1, or a light chain CDR3 sequence as depicted in Figure 1 in which the isoleucine is altered to a methionine.

The invention further provides an isolated, synthetic or recombinant nucleic acid sequence or a functional equivalent thereof with a length of at least 15 nucleotides, preferably at least 30 nucleotides, more preferably at least 50 nucleotides, more preferably at least 75 nucleotides, encoding a binding compound according to the invention. Such nucleic acid is for instance isolated from a B-cell which is capable of producing an antibody according to the invention. A preferred embodiment provides a nucleic acid sequence comprising a sequence which has at least 70% sequence identity to at least 15 nucleotides of a nucleic acid sequence as depicted in Figure 1. A nucleic acid sequence according to the invention preferably comprises a sequence which has at least 75%, more preferably at least 80%, more preferably at least 85%, more preferably at least 90%, most preferably at least 95% sequence identity to at least 15 nucleotides of a nucleic acid sequence as depicted in



Figure 1. Preferably, said nucleic acid sequence as depicted in Figure 1 comprises at least one CDR encoding sequence.

One preferred embodiment provides an isolated, synthetic or recombinant  
 5 nucleic acid sequence with a length of at least 15 nucleotides, or a functional  
 equivalent thereof, encoding at least one CDR sequence of an antibody or  
 immunoglobulin chain according to the invention. Said nucleic acid sequence  
 preferably encodes at least one CDR sequence which has at least 70% sequence  
 identity to a CDR region of antibody F1. Nucleic acid sequences encoding F1 CDR  
 10 regions are depicted in Figure 1. Further provided is therefore an isolated, synthetic  
 or recombinant nucleic acid sequence, or a functional equivalent thereof, comprising a  
 sequence which has at least 70% sequence identity to a sequence selected from the  
 group consisting of cgctttgccatgagc (SEQ ID NO:12),  
 tcgatcaataatgggaataaaccatactacgcacggctcggtacaatac (SEQ ID NO:13),  
 15 gatcacctagtagtggtggccacctttgactcc (SEQ ID NO:14),  
 cgggccagtgaacacgttggtgactggttgcc (SEQ ID NO:15), aagacatctattctagaaagt (SEQ ID  
 NO:16) and caacactatatacggttccgtacact (SEQ ID NO:17).

Said nucleic acid sequence or functional equivalent preferably comprises a  
 sequence which has at least 75%, more preferably at least 80%, more preferably at  
 20 least 85%, more preferably at least 90% sequence identity to any of the above  
 mentioned sequences. Further provided is a nucleic acid sequence or functional  
 equivalent thereof comprising a sequence which has at least 70% sequence identity to  
 at least part of a nucleotide sequence as depicted in Figure 1, said part having at least  
 15 nucleotides and encoding at least one CDR region.

25 A nucleic acid sequence or functional equivalent thereof according to the  
 present invention preferably encodes a region which has at least 70% sequence  
 identity to an F1 CDR region, an F1 heavy chain and/or an F1 light chain. One  
 embodiment thus provides an isolated, synthetic or recombinant nucleic acid  
 30 sequence, or a functional equivalent thereof, comprising a sequence encoding an  
 amino acid sequence which has at least 70% sequence identity to the sequence  
 RFAMS (SEQ ID NO:1), and/or at least 70% sequence identity to the sequence  
 SINNGNNPYYARSVQY (SEQ ID NO:2), and/or at least 70% sequence identity to the

- sequence DHPSSGWPTFDS (SEQ ID NO:3), and/or at least 70% sequence identity to the sequence RASENVGDWLA (SEQ ID NO:4), and/or at least 70% sequence identity to the sequence KTSILES (SEQ ID NO:5), and/or at least 70% sequence identity to the sequence QHYXRFPYT, wherein X is I or M (SEQ ID NO:6), and/or at least 70%
- 5 sequence identity to the sequence  
 EVQLLES G GGLVQPGGSLRLSCAASGFTLSRFAMSWVRQAPGGRGLEWVASINNGN  
 NPY YARSVQYRFTVSRDVSQNTVSLQMNNLRAEDSATYFCAK DHPSSGWPTFDS  
 WGP GTLVTVSS (SEQ ID NO:7), and/or at least 70% sequence identity to the  
 sequence
- 10 DIQLTQSPSALPASVGDRVSITCRASENVGDWLAWYRQKPGKAPNLLIYKTSILESG  
 VPSRFSGSGSGTEFTLTISLQPD D F A T Y Y C Q H Y X R F P Y T F G Q G T K L E I K R T V ,  
 wherein X is I or M (SEQ ID NO:8). Also provided are nucleic acid sequences or  
 functional equivalents thereof encoding variants of the F1 antibody according to the  
 invention. Provided by the invention are, for example, nucleic acid sequences encoding
- 15 a heavy chain sequence comprising the sequence  
 EVQLVES G GGLVQPGGSLRLSCAASGFTLSRFAMSWVRQAPGGRGLEWVASINNGN  
 NPY YARSVQYRFTVSRDVSQNTVSLQMNNLRAEDSATYFCAK DHPSSGWPTFDS  
 WGP GTLVTVSS (SEQ ID NO:9), and/or the sequence  
 EVQLLES G GGLVQPGGSLRLSCAASGFTLSRFAMSWVRQAPGGRGLEWVASINNGN
- 20 NPY YARSVQYRFTVSRDVSQNTVSLQMNNLRAEDSATYFCAK DHPSSGWPTFDS  
 WGP GTLVTVSS (SEQ ID NO:7), and encoding a light chain sequence comprising the  
 sequence  
 DIQLTQSPSALPASVGDRVSITCRASENVGDWLAWYRQKPGKAPNLLIYKTSILESG  
 VPSRFSGSGSGTEFTLTISLQPD D F A T Y Y C Q H Y X R F P Y T F G Q G T K L E I K R A ,
- 25 wherein X is I of M (SEQ ID NO:10), and/or the sequence  
 DIQLTQSPSALPASVGDRVSITCRASENVGDWLAWYRQKPGKAPNLLIYKTSILESG  
 VPSRFSGSGSGTEFTLTISLQPD D F A T Y Y C Q H Y X R F P Y T F G Q G T K V E I K R T V ,  
 wherein X is I of M (SEQ ID NO:11), and/or the sequence  
 DIQLTQSPSALPASVGDRVSITCRASENVGDWLAWYRQKPGKAPNLLIYKTSILESG
- 30 VPSRFSGSGSGTEFTLTISLQPD D F A T Y Y C Q H Y X R F P Y T F G Q G T K L E I K R T V ,  
 wherein X is I of M (SEQ ID NO:8).

In one embodiment an asparagine at position 53 of the heavy chain (numbering according to Kabat, 1991) is replaced by another amino acid other than

glutamine, in order to prevent deamidation of the asparagine at said position.  
Preferably said asparagine is replaced by a serine.

The term “% sequence identity” is defined herein as the percentage of residues  
5 in a candidate amino acid or nucleic acid sequence that is identical with the residues  
in a reference sequence after aligning the two sequences and introducing gaps, if  
necessary, to achieve the maximum percent identity. Methods and computer  
programs for the alignment are well known in the art.

As used herein, a nucleic acid molecule or nucleic acid sequence of the  
10 invention preferably comprises a chain of nucleotides, more preferably DNA and/or  
RNA. In other embodiments a nucleic acid molecule or nucleic acid sequence of the  
invention comprises other kinds of nucleic acid structures such as for instance a  
DNA/RNA helix, peptide nucleic acid (PNA), locked nucleic acid (LNA) and/or a  
ribozyme. Such other nucleic acid structures are referred to as functional equivalents  
15 of a nucleic acid sequence. The term “functional equivalent of a nucleic acid sequence”  
also encompasses a chain comprising non-natural nucleotides, modified nucleotides  
and/or non-nucleotide building blocks which exhibit the same function as natural  
nucleotides.

20 A nucleic acid sequence according to the present invention is particularly  
useful for generating binding compounds which are specific for *S. aureus* and/or *S.*  
*epidermidis*. This is for instance done by introducing such nucleic acid sequence into a  
cell so that the cell's nucleic acid translation machinery will produce the encoded  
binding compound. In one embodiment, genes encoding a heavy and/or light chain  
25 according to the invention are expressed in so called producer cells, such as for  
instance cells of a Chinese hamster ovary (CHO), NSO (a mouse myeloma) or 293(T)  
cell line, some of which are adapted to commercial antibody production. Proliferation  
of said producer cells results in a producer cell line capable of producing antibodies or  
functional parts thereof according to the present invention. Preferably, said producer  
30 cell line is suitable for producing compounds for use in humans. Hence, said producer  
cell line is preferably free of pathogenic agents such as pathogenic micro-organisms.  
Most preferably, binding compounds consisting of human sequences are generated  
using a nucleic acid sequence according to the invention.

An isolated or recombinant antibody producing cell capable of producing an antibody or functional part or immunoglobulin chain or functional equivalent according to the invention is therefore also provided, as well as a method for  
5 producing an antibody or functional part or immunoglobulin chain or functional equivalent according to the invention, comprising providing a cell with a nucleic acid sequence or functional equivalent according to the invention and allowing said cell to translate said nucleic acid sequence or functional equivalent according to the invention, thereby producing said antibody or functional part or immunoglobulin  
10 chain or functional equivalent according to the invention.

An antibody producing cell is defined herein as a cell which is capable of producing and/or secreting an antibody or a functional part thereof, and/or which is capable of developing into a cell which is capable of producing and/or secreting antibody or a functional part thereof. An antibody producing cell according to the  
15 invention is preferably a producer cell which is adapted to commercial antibody production. Preferably, said producer cell is suitable for producing compounds for use in humans.

A method according to the invention preferably further comprises a step of  
20 harvesting, purifying and/or isolating said antibody or functional part or immunoglobulin chain or functional equivalent according to the invention. The thus obtained binding compounds according to the invention are preferably used in diagnosis of *Staphylococcus* infection, isolation or detection of *Staphylococcus* bacteria, distinguishing between *Staphylococcus* species and other gram-positive  
25 bacteria and human therapy, optionally after additional purification, isolation and/or other processing steps.

An antibody or functional part thereof or immunoglobulin chain or functional equivalent thereof according to the present invention is particularly suitable for  
30 diagnostic uses. For instance, a sample, such as a tissue or blood sample, can be obtained from an individual or from any other source suspected to be infected with a *Staphylococcus* bacteria, preferably *S. aureus* and/or *S. epidermidis*, more preferably MRSA. Subsequently, said sample can be mixed with an antibody or immunoglobulin

chain or functional equivalent or part thereof according to the invention. Said antibody, immunoglobulin chain or functional equivalent or part will specifically bind to *Staphylococcus* bacteria, preferably *S. aureus* and/or *S. epidermidis*. Bacteria bound to an antibody, immunoglobulin chain or functional equivalent or part can be isolated from the sample using any method known in the art, for example, but not limited to, isolation using magnetic beads, streptavidin-coated beads, or isolation through the use of secondary antibodies immobilized on a column. After washing of the bound bacteria and antibody, immunoglobulin chain or functional equivalent or part thereof, bacteria can be eluted from said antibody, immunoglobulin chain or functional equivalent or part by any method known in the art. For instance, binding between bacteria and antibody, immunoglobulin chain or functional equivalent or part can be disrupted by increasing the concentration of salts and/or reducing or increasing pH, and/or by addition of excess epitope.

Isolation of *Staphylococcus* bacteria, preferably *S. aureus* and/or *S. epidermidis*, may be used for various applications. For instance, infection with several different gram-positive bacteria may result in overlapping symptoms in an individual. In such cases, it can be difficult to discriminate between *S. aureus* and/or *S. epidermidis* and other gram-positive bacteria. An antibody, immunoglobulin chain or functional equivalent or part thereof according to the present invention can then be used to detect the presence of *S. aureus* and/or *S. epidermidis*, or for distinguishing between *S. aureus* and/or *S. epidermidis* and other bacteria. Isolation of bacteria from a sample of an individual suspected of suffering from an infection with *S. aureus* and/or *S. epidermidis* or from any other source, such as a bacterial culture, can facilitate detection of said *Staphylococcus* bacteria, because isolation results in an increased concentration and/or a higher purity of said *Staphylococcus* bacteria.

Isolation of *Staphylococcus* species, preferably *S. aureus* and/or *S. epidermidis*, more preferably MRSA, can for instance further be used to identify the specific *S. aureus* and/or *S. epidermidis* strain, preferably the MRSA strain in a sample. Identification of said strain can for instance be performed by determining the sequence of the bacterial DNA. In such case it is preferred to first obtain an isolated *S. aureus* and/or *S. epidermidis*.

In one embodiment of the invention, an antibody, immunoglobulin chain or functional equivalent or part thereof according to the present invention is labeled in

order to be able to detect said antibody, immunoglobulin chain, or functional equivalent or part, for instance, but not limited to, fluorescently labeled, or radioactively labeled. Alternatively, an antibody or functional part thereof or immunoglobulin chain or functional equivalent thereof according to the invention is  
5 detected using a labeled secondary antibody which is directed against said antibody, immunoglobulin chain or functional equivalent or part thereof according to the invention. If binding of said antibody, immunoglobulin chain or functional equivalent or part thereof is detected, *S. aureus* and/or *S. epidermidis* is present.

Provided by the invention is therefore a use of an antibody or functional part  
10 thereof or immunoglobulin chain or functional equivalent thereof according to the invention for diagnosis of a *Staphylococcus* infection, preferably *S. aureus* infection, more preferably MRSA infection, for detecting *S. aureus* and/or *S. epidermidis*, preferably MRSA, and for distinguishing between *S. aureus* and/or *S. epidermidis*, preferably MRSA and other gram-positive bacteria. Also provided is an antibody or  
15 functional part thereof or an immunoglobulin chain or functional equivalent thereof according to the invention for use in the diagnosis of a *Staphylococcus* infection, preferably *S. aureus* infection, more preferably MRSA infection.

Further provided is a method for isolating *S. aureus* and/or *S. epidermidis* bacteria from a solution using an antibody or functional part or an immunoglobulin  
20 chain or functional equivalent thereof according to the invention. Said method preferably comprises providing a sample of an individual suspected of suffering from an infection with *S. aureus* and/or *S. epidermidis*, preferably MRSA, or from any other source, such as a bacterial culture, adding an antibody or functional part or an immunoglobulin chain or functional equivalent thereof according to the invention to  
25 said sample, allowing binding of said antibody or functional part or an immunoglobulin chain or functional equivalent thereof according to the invention to *S. aureus* and/or *S. epidermidis* bacteria, when present, and isolating *S. aureus* and/or *S. epidermidis* bacteria bound to an antibody or functional part or an immunoglobulin chain or functional equivalent thereof according to the invention from said sample.

30

Now that Gram-positive bacteria-specific binding compounds according to the invention and nucleic acid sequences coding therefore have been provided, including human binding compounds, improved therapeutic applications have become available.

Gram-positive bacteria such as *S. aureus* and/or *S. epidermidis* are counteracted by binding compounds according to the invention. A binding compound according to the invention is therefore particularly suitable for use as a medicine or prophylactic agent. Preferably, binding compounds are used which consist of human sequences, or  
5 which have at most 5% of non-human sequences, in order to reduce the chance of adverse side effects when human individuals are treated. An antibody or functional part or an immunoglobulin chain or functional equivalent thereof or a nucleic acid sequence or functional equivalent thereof according to the invention for use as a medicament and/or prophylactic agent is therefore also herewith provided. When a  
10 nucleic acid or functional equivalent according to the invention is administered, it will be translated *in situ* into a binding compound according to the invention. In a particularly preferred embodiment said antibody comprises antibody F1, or a functional part thereof. Said medicament or prophylactic agent is preferably used for counteracting or at least in part preventing an infection by *S. aureus* and/or *S.*  
15 *epidermidis* or for counteracting or at least in part preventing adverse effects of an infection by *S. aureus* and/or *S. epidermidis*. Further provided is therefore an antibody or functional part or an immunoglobulin chain or functional equivalent thereof or a nucleic acid sequence or functional equivalent thereof according to the invention for use as a medicament and/or prophylactic agent for at least in part  
20 treating and/or preventing a condition related to *S. aureus* and/or *S. epidermidis*. Non-limiting examples of such conditions are skin infections, pimples, impetigo, boils, cellulitis folliculitis, furuncles, carbuncles, scalded skin syndrome, abscesses, pneumonia, meningitis, osteomyelitis, endocarditis, toxic shock syndrome and septicemia. Preferably, *S. aureus* infection is counteracted or at least in part  
25 prevented. Most preferably, an MRSA-related condition is counteracted, diminished and/or at least in part prevented. A use of an antibody or functional part or an immunoglobulin chain or functional equivalent thereof or a nucleic acid sequence or functional equivalent thereof according to the invention for the preparation of a medicament and/or prophylactic agent for at least in part treating and/or preventing  
30 *S. aureus* and/or *S. epidermidis* is therefore also provided, as well as a method for at least in part treating or preventing a condition related to *S. aureus* and/or *S. epidermidis*, the method comprising administering to an individual in need thereof a therapeutically effective amount of an antibody or functional part or an

immunoglobulin chain or functional equivalent according to the invention, preferably after said individual has been diagnosed to be infected by *S. aureus* and/or *S. epidermidis*. Said condition preferably comprises at least one of the *S. aureus*-related conditions listed above, most preferably an MRSA-related condition.

5           Said antibody preferably comprises antibody F1, or a functional part thereof.

In order to counteract Gram-positive bacteria, a binding compound according to the invention is preferably administered to an individual before an infection has taken place. Alternatively, a binding compound according to the invention is  
10       administered when an individual is already infected. Said binding compound is preferably administered to individuals with an increased risk of complications, such as for instance hospitalized individuals and/or individuals with compromised immunity. Also elderly people have an increased risk of bacterial conditions. Binding compounds according to the invention are preferably administered via one or more  
15       injections. Dose ranges of binding compounds according to the invention to be used in the therapeutic applications as described herein before are designed on the basis of rising dose studies in the clinic in clinical trials for which rigorous protocol requirements exist. Typical doses are between 0.1 and 10 mg per kg body weight. For therapeutic application binding compounds according to the invention are typically  
20       combined with a pharmaceutically acceptable carrier, diluent and/or excipient. Examples of suitable carriers for instance comprise keyhole limpet haemocyanin (KLH), serum albumin (e.g. BSA or RSA) and ovalbumin. In one preferred embodiment said suitable carrier comprises a solution like for example saline.

25           In yet another embodiment a nucleic acid encoding a binding compound according to the invention is used. As already described, upon administration of such nucleic acid, binding compounds are produced by the host's machinery. Produced binding compounds are capable of preventing and/or counteracting Gram-positive bacterial infection and/or the adverse effects of such infection. A nucleic acid sequence  
30       or functional equivalent according to the invention for use as a medicament and/or prophylactic agent is therefore also herewith provided. Said nucleic acid is preferably used for counteracting *S. aureus* and/or *S. epidermidis*, more preferably *S. aureus*, most preferably MRSA. Further provided is therefore a use of a nucleic acid sequence



or functional equivalent according to the invention for the preparation of a medicament and/or prophylactic agent for at least in part treating and/or preventing a Gram-positive bacterium-related condition. Said Gram-positive bacterium-related condition preferably comprises an infection by *S. aureus* or *S. epidermidis*, more  
5 preferably an *S. aureus* infection, most preferably an MRSA infection.

Further provided is a pharmaceutical composition comprising an antibody or functional part or an immunoglobulin chain or functional equivalent thereof or a nucleic acid sequence or functional equivalent thereof according to the invention and a  
10 pharmaceutical acceptable carrier, diluent or excipient. Said pharmaceutical composition is preferably suitable for human use.

The invention is further explained in the following examples. These examples do not limit the scope of the invention, but merely serve to clarify the invention.

15

All patent documents and other publications that are referred to in the detailed description are incorporated herein by reference for all purposes.

ExamplesExample 1

## 5 METHODS

## B cell isolation

B-cells were obtained from fresh blood of adults by Ficoll separation and CD4/CD8 negative selection with MACS microbeads as described by the manufacturer (Miltenyi Biotech). To obtain memory B cells, cells were sorted for CD19<sup>+</sup>CD3<sup>+</sup>CD27<sup>+</sup>IgD<sup>+</sup>IgA<sup>+</sup> on a FACSaria (Becton Dickinson). The use of these tissues was approved by the medical ethical committees of the institution and was contingent on informed consent. Donors were selected based on carrying hospital acquired MRSA strains with genotype cluster 109 and 16.

15

## Cell culture

B-cells maintained in standard culture medium containing IMDM (Gibco), 8% FBS (HyClone) and penicillin/streptomycin (Roche) were co-cultured on  $\gamma$ -irradiated (50Gy) mouse L cell fibroblasts stably expressing CD40L (CD40L-L cells, 10<sup>5</sup> cells/ml) and recombinant mouse IL-21 (25ng/ml, R&D systems). rhIL-4 (R&D) was used at 50ng/ml. Cells were routinely tested by PCR and were found negative for the presence of mycoplasma and EBV (data not shown).

20

Bulk transduced human memory B cells double positive for NGFR and GFP were purified by FACS cell sorting and cultured in 96 well plates at a cell density of 500 cell per well. Culture supernatants were tested in ELISAs using bacterial lysates of the Newman and SH1000 strains. Positive cultures were subcloned at 10 cell/well cell density in 96 well plates and again tested by ELISA. Subsequently positive cultures were seeded at 1 cell per well and tested again by ELISA for reactivity against *S. aureus* strains Newman and SH1000.

30

#### Retroviral transduction

The BCL6 retroviral construct has been described before (Shvarts A. et al. Genes Dev 16, 681-686 (2002)). cDNA encoding human Bcl-xL was kindly provided by Dr. Stanley Korsmeyer. BCL6 and Bcl-xL were separately cloned into a BCL6-NGFR and a BclxL-GFP construct. These constructs were transfected into the LZRS retroviral packaging cells, phoenix as described before (Jaleco A.C. et al. Blood 94, 2637-2646 (1999); Scheeren F.A. et al. Nat Immunol 6, 303-313 (2005)). Memory B-cells were double transduced by the BCL6 and Bcl-xL containing retroviruses after activation on CD40L-L cells in the presence of rmIL-21 for 36 hrs as described before (Diehl S.A. et al. J Immunol 180, 4805-4815 (2008); Kwakkenbos M. et al. Nat Med in press (2009)). Transduced cells were maintained on CD40L-L cells with rmIL-21.

#### ELISA

To determine antibody content ELISA plates were coated with anti-human IgG (Jackson ImmunoResearch Laboratories) at 5 µg/ml in PBS for 1hr at 37°C or o/n at 4°C and washed in ELISA wash buffer (PBS, 0.5% Tween-20). 4% milk in PBS was used as blocking agent, before serial dilution of cell culture supernatants and an enzyme-conjugated detection antibody was added (dilution 1:2500 for HRP-conjugated anti-IgG (Jackson)). TMB substrate/stop solution (Biosource) was used for development of the ELISAs.

For screening purposes we used lysates from the Newman and SH1000 strains. Both were made in PBS and directly coated at 5 to 10 µg ml<sup>-1</sup> before B cell culture supernatants were tested un- or 1:2 diluted.

To explore the antigen specificity of the human IgG1 clone F1, an LTA detection ELISA was developed. Purified LTA preparations from *S. aureus*, *B. subtilis*, *S. faecalis* and *S. pyogenes* (Sigma) was added to ELISA plates coated with polyclonal IgG purified mouse anti-LTA (1/200 stock 1 mg ml<sup>-1</sup>, QED Bioscience), before secondary antibodies were added.

In addition, we tested several LTA preparations derived from a library developed by W. Fischer (Institut für Biochemie, Univ of Erlangen, Germany) and kindly provided by B. Appelmelk (VU, Amsterdam, Netherlands) (see for more details (Keller R. et al. Infect Immun 60, 3664-3672 (1992), Polotsky V.Y. et al. Infection and Immunity 64, 380-383 (1996) and Greenberg J.W. et al. Infection and Immunity 64,

3318-3325 (1996)) and reviewed in (Weidenmaier C. et al. Nat Rev Microbiol 6, 276-287 (2008)) in direct ELISA's. LTA preparations were coated at 1  $\mu\text{g ml}^{-1}$  before rF1 (10  $\mu\text{g ml}^{-1}$ ) or control antibodies (1:5 dilution of hybridoma supernatant) were added and further detected with conjugated anti-human or mouse antibodies. The panel of  
5 purified LTA preparations included: *B. subtilis*, *S. aureus*, *L. lactis*, *L. garvieae*, *B. bifidum*, *M. luteus*, *L. casei*, *L. mesenteroides*, *B. licheniformis*, *L. welshimeri*, *E. hirae*, *L. raffinolactis*, *S. mutans*, *S. pneumoniae*. Several variants contain or lack alanine residues and/or lipid anchors (not depicted here).

#### 10 Binding of the F1 antibody to bacterial cultures

The Newman *S. aureus* and the *S. pneumoniae* strain (serotype 3) were used. Newman was cultured in TSH 50 ml O/N, then 1 ml was resuspended in 100 ml for 2 to 2.5 hrs till OD:1 and bacteria were collected. *S. pneumoniae* was cultured in Todd Hewitt medium mixed with yeast medium. Before, bacteria were incubated with F1  
15 antibody, a control IgG (D25, a human anti-RSV antibody) or only with the secondary antibody (IgG-PE only), cells were pretreated with 100% total mouse serum to prevent background staining. After washing the secondary antibody was added (IgG-PE). Antibody incubations were performed for 20 min on ice.

#### 20 F1 sequence determination and expression cloning

We isolated total RNA using Trizol (Invitrogen), generated cDNA by using superscript RT, performed PCR and cloned the heavy and light chain variable regions into the pCR2.1 TA cloning vector (Invitrogen). To rule out reverse transcriptase or DNA polymerase induced mutations, we performed several independent cloning  
25 experiments. To produce recombinant F1 mAb we cloned F1 heavy and light variable regions in frame with human IgG1 and Kappa constant regions into a pcDNA3.1 (Invitrogen) based vector and transiently transfected 293T cells. We purified recombinant F1 from the culture supernatant with Protein A.

### 30 RESULTS

#### RESULTS

##### Generation of the F1 clone

From three subjects who were tested positive for MRSA but were not sick, 50-60ml of heparin blood was collected and peripheral B-cells were isolated after a ficoll purification step. B-cells from several B-cell populations were double transduced with retroviruses containing BCL6-NGFR and Bcl-xL-GFP (Diehl et al and Kwakkenbos et al). From the IgG, CD27 positive population, polyclonal mini-cultures B-cell cultures were started in 96 wells plate with a cell density of 500 cells/well. Supernatant of these mini-cultures was collected and used in ELISAs to screen for the presence of *S. aureus*-specific IgG antibodies (in these ELISAs the coating was cell lysates of two *S. aureus* strains, SH1000 and Newman). Mini-cultures that were screened positive in both the SH1000 as well as the Newman *S. aureus* were seeded in new mini-cultures at a density of 10 cells/well. Again, supernatant of these mini-cultures was collected and screened in the SH1000 and Newman ELISAs. Clones that were screened positive in both ELISAs were seeded into monoclonal cultures (i.e. 1 cell/well). After testing the supernatant of these monoclonal cultures, one clone (named F1) was found to produce *S. aureus* specific monoclonal IgG antibodies.

#### **Antibodies in the supernatant of the F1 clone bind to LTA preparations from *S. aureus***

Generating the F1 clone, we already found that supernatant of F1 bound to the bacterial cell lysates of two *S. aureus* strains, SH1000 and Newman. The major cell wall compound of Gram-positive bacteria is LTA, and therefore we decided to test binding of F1 supernatant to *S. aureus* LTA preparations in an ELISA. As shown in Table 1, supernatant of the F1 clone binds to bacterial cell lysates of the SH1000 and Newman *S. aureus* strain but also to commercially purchased purified *S. aureus* LTA preparations. We noted, however, that the binding to the LTA preparations was significantly lower than that observed with whole bacteria.

**Table 1:** Supernatant of the F1 clone binds to *S. aureus* LTA preparations. As a negative control an anti-mouse-HRP conjugated secondary antibody was used. Another control was an anti-influenza virus antibody that only detected influenza H3 protein.

5

	F1 clone	mouse anti-LTA	anti-flu control
SH1000	1,004	-0,010	-0,007
Newman	0,753	-0,007	0,007
SA LTA (siam)	0,176	-0,005	-0,009
Flu H3	0,003	-0,002	1,523
No coat	-0,013	-0,014	-0,015

### The recombinant produced F1 antibody binds to LTA preparations from multiple sources

- 10 After cloning the antibody genes into expression vectors and producing recombinant F1 (rF1) antibody in an expression system, the rF1 antibody was tested on purified LTA preparations from several bacteria. As shown in Figure 2A, the rF1 antibody binds well to commercial LTA samples obtained from *S. aureus* and *B. subtilis*, and a bit less profoundly to LTA samples from *S. faecalis* and *S. pyogenes*. The rF1 antibody
- 15 did not bind to an LTA sample from *S. pneumoniae* (data not shown). In addition rF1 recognized highly purified LTA samples from *B. subtilis*, *B. licheniformis* and two isolates of *S. aureus* (Figure 2b). rF1 did not bind to LTA preparations from *S. mutans* (Fig. 2b) or from *L. lactis*, *L. garvieae*, *B. bifidum*, *M. luteus*, *L. casei*, *L. mesenteroides*, *L. welshimeri*, *E. hirae*, *L. raffinolactis*, *S. mutans* and
- 20 *S. pneumoniae* (results not shown).

### Recombinant F1 antibody binds to living *S. aureus* bacteria

- In order to study whether the rF1 antibody would also recognize living Gram-positive bacteria, binding of the rF1 antibody to *S. aureus* and *S. pneumoniae* was tested by
- 25 using flow cytometry. As shown in figure 3A, the rF1 antibody binds to living *S.*

*aureus* bacteria (Newman strain), but not to *S. pneumoniae*. In addition we show that rF1 recognized 6 clinical *S. aureus* isolates; one is a pathogenic strain which is PVL positive, 3 regular strains and 2 MRSA strain (Figure 3b).

5

## Example 2

### METHODS

#### 10 **Bacterial strains and culture.**

Methicillin-resistant *S. aureus* (MRSA) strains USA300 (1114), USA400, N315, USA100, USA1000, COL, MRSA252, as well as methicillin-sensitive *S. aureus* (MSSA) strains Reynolds, Becker, Smith Diffuse, MN8, and vancomycin intermediate sensitive (VISA) strain Mu50, were all obtained from the Network on Antibiotic Resistance in *Staphylococcus aureus* (NARSA); MSSA strains Newman and Rosenbach were from ATCC. *Staphylococcus epidermidis*, *Bacillus subtilis*, *Enterococcus faecalis*, and *Streptococcus pyogenes* were obtained from Ward's Natural Science; *Listeria monocytogenes* was from ATCC. Bacteria were grown on tryptic soy agar (TSA) plates supplemented with 5% sheep blood for 18 h at 37 °C. For liquid cultures, single colonies from TSA plates were inoculated into tryptic soy broth (TSB) and incubated at 37 °C while shaking at 200 rpm for 18 h. Fresh 100-fold dilutions of these cultures in fresh TSB were further subcultured for various times.

#### **FACS analysis of rF1 binding to whole bacteria grown in vitro.**

25 For antibody staining of whole cells, bacteria were harvested from TSA plates or TSB cultures, and washed with Hank's Buffered Salt Solution (HBSS) without phenol red supplemented with 0.1% BSA (IgG free; Sigma) and 10 mM Hepes, pH 7.4 (HB buffer), by centrifugation at 1700 x g for 20 min. Bacterial concentrations were estimated by reading optical density at 630 nm. Bacterial suspensions of  $20 \times 10^8$  CFU/mL in HB buffer were mixed with equal volumes of 300 µg/mL of rabbit IgG (Sigma), and incubated for 1 h at room temperature (RT) to block nonspecific IgG binding. Primary antibodies, including rF1 and a human IgG1 isotype control, were added to a final concentration of 2 µg/mL, and these mixtures were incubated for 15

min at RT. After two washes with HB, bacterial pellets were resuspended in a solution of fluorescent anti-human IgG secondary antibodies (Jackson Immunoresearch) and incubated for 15 min at RT. The bacteria were washed twice with PBS, resuspended in PBS with 1% paraformaldehyde, and analyzed by flow  
 5 cytometry.

#### **FACS analysis of rF1 binding to whole bacteria from infected tissues.**

For analysis of antibody binding to bacteria from infected tissue, 4 h subcultures of USA300 in TSB were washed with PBS. Mice were injected  
 10 intravenously with a 100  $\mu$ L of a suspension of USA300 in PBS with an estimated concentration of  $10 \times 10^8$  CFU/mL. Three days later, kidneys, livers, and lungs were harvested and homogenized using conical tissue grinder tubes (VWR). When indicated, organs were harvested at different time points of infection. To lyse mouse cells, the homogenates were incubated for 10 min at RT in PBS containing 0.1%  
 15 Triton-X100 (Thermo), 10  $\mu$ g/mL of DNaseI (Roche) and Complete Mini protease inhibitor cocktail (Roche), and passed through a 40  $\mu$ m filter (Falcon). The cell suspensions were washed twice with PBS and resuspended in HB buffer, mixed with equal volumes of 600  $\mu$ g/mL of human IgG (Sigma), and incubated for 1 h at RT. Primary Abs, including rF1 and a human IgG1 isotype control, were added to a final  
 20 concentration of 2  $\mu$ g/mL. To differentiate bacteria from mouse organ debris, rabbit IgG anti-*S. aureus* (Abcam) was added to a concentration of 20  $\mu$ g/mL. After incubation for 15 min at RT, cells were washed twice with HB buffer, and resuspended in a mixture of anti-human IgG and anti-rabbit IgG secondary antibodies, each labeled with a different fluorochrome (Jackson Immunoresearch).  
 25 After two washes with PBS, cells were resuspended in PBS with 2% paraformaldehyde and analyzed by flow cytometry. After selecting bacteria from double fluorescence plots by gating for positive staining with rabbit IgG anti-*S. aureus*, overlay histogram plots of fluorescence intensities of rF1 and isotype control were generated.

30

#### **RESULTS**

##### **rF1 binds strongly to 14 *S. aureus* strains and *S. epidermidis***



Seven Methicillin-resistant *S. aureus* (MRSA) strains, six methicillin-sensitive *S. aureus* (MSSA) strains, one vancomycin intermediate sensitive *S. aureus* (VISA) strain, *S. epidermidis* and several other gram-positive species were tested for binding to rF1 antibody. As shown in figure 4, rF1 strongly binds to all 14 *S. aureus* strains (figure 4A) and to *S. epidermidis* (figure 4B), but not to the other tested gram-positive species (figure 4B).

#### **rF1 binds to MRSA from different growth stages and from in vivo infection**

We tested the ability of mAb rF1 to bind to bacteria both in different tissues and over the course of infection. We found that rF1 bound to bacteria isolated from murine kidney, liver and lung tissue two days after infection and that the binding to bacteria isolated from infected kidneys was stable, binding bacteria 2, 3 and 8 days after infection.

Binding of rF1 antibody to different growth stages of MRSA (strain USA300), namely early logarithmical growth (2 hours) and post exponential growth (8 hours) in TSB cultures, and growth of solid colonies on TSA plates was tested. rF1 strongly binds to all growth stages tested (figure 5A).

Binding of rF1 antibody to MRSA (strain USA300) to whole bacteria from infected tissue was tested in homogenized kidneys from mice three day after the mice were systemically infected with MRSA. As shown in figure 5B rF1 binds to MRSA obtained from infected tissue.

#### Example 3

Further experiments were performed to identify the epitope bound by antibody rF1. Although binding to LTA preparations had been observed (see, e.g., Example 1), that binding was not as robust as binding to whole bacteria suggesting that another epitope may be involved in rF1 binding.

## METHODS

**Immunoprecipitation, Western blotting and mass spectrometry of cell wall lysates of *S. aureus* and *S. epidermidis* and commercial WTA preparation**

5           40 micrograms of a commercial wall teichoic acid (WTA) preparation from Wood46 *S. aureus* strain (Bioscience Resource Project, Maine) was split into two parts and immunoprecipitated with 1 ug/ml of rF1 or isotype control human antibody. Antibodies were captured with Protein A/G Ultralink Resin (Pierce). The samples were then treated with 50mM dithiothreitol, 10mM 2-Iodoacetamide and run on an 8% Tris-glycine gel and subsequently Western blotted with rF1.

15           A cell wall preparation of a 20 ml overnight culture of USA300 *S. aureus* strain was prepared by treatment of the culture (40 mg cell pellet/ml) with 100mg/ml of lysostaphin in 30% raffinose buffer at 37°C for 30 minutes. The entire cell wall prep was filtered, diluted up to 10 ml with NP40 Lysis buffer and incubated twice with anti-Flag M2 Agarose (Sigma) to deplete as much protein-A from the cell wall prep as possible. Final cell wall preparation was split into two parts and immunoprecipitated with 1 ug/ml of rF1 or isotype control human antibody. Antibodies were captured with Protein A/G Ultralink Resin (Pierce). The samples were then treated with 50mM dithiothreitol, 10mM 2-Iodoacetamide and run on an 8% Tris-glycine gel and subsequently silver stained or Western blotted with rF1.

25           Lysates from a 20 ml overnight culture of *Staphylococcus epidermidis* was prepared by bead beating in NP40 Lysis Buffer. The resulting lysate preparation was diluted to 10 ml with NP40 Lysis Buffer, split into two parts and immunoprecipitated with 1 ug/ml of rF1 or control antibody. Antibodies were captured with Protein A/G Ultralink Resin (Pierce). The samples were then treated with 50mM dithiothreitol, 10mM 2-Iodoacetamide and run on an 8% Tris-glycine gel and subsequently silver stained or Western blotted with rF1.

30

For proteomic analysis, samples were applied to a precast SDS PAGE mini gel and the resolved proteins stained with Coomassie Blue. Gel slices from the region of the gel corresponding to bands visualized by rF1 western blot were excised and

reduced, alkylated with iodoacetamide, and digested *in situ* with trypsin. Resulting tryptic peptides were analyzed by microcapillary reverse-phase liquid chromatography- nano electrospray tandem mass spectrometry on a hybrid linear ion trap Fourier transform ion cyclotron resonance mass spectrometer (LTQ-FT; Thermo  
5 Fisher) in a data-dependent experiment. Tandem mass spectral results were submitted for database searching using Mascot software (Matrix Science).

#### **Expression of exogenous ClfA expressed in *S. aureus* and *E. coli***

*S.aureus expression of His-tagged ClfA:* The Clumping factor-A (ClfA) gene  
10 was PCR amplified from the sequence encoding the signal sequence to the sequence encoding the glycine in the LPXTG motif from USA300 genomic DNA. A c-terminal His Tag was engineered at the end of the LPXTG motif and ligated into the pTet *S.aureus* expression vector (pSAS10 from Genentech). The resulting construct was then electroporated into *S. aureus* WT RN4220. A 20 ml culture of either the  
15 electroporated RN4220 or RN4220 empty (not carrying a pTet expression vector) was inoculated from an overnight culture (starting OD<sub>600</sub> of 0.15), grown for 1 hr in trypticase soy broth (TSB) and then induced protein expression for 2 hrs with anhydrotetracycline (200 ng/ml). At the end of the induction period, the *S. aureus* culture was pre-lysed with lysostaphin (50 ug/ml) and then further lysed by bead  
20 beating in lysis buffer (150 mM NaCl, 20 mM Tris pH 7.5, 1% triton-X, and Roche protease inhibitor EDTA-free tablets). Cleared lysates were then incubated with NiNta resin (Qiagen) in the presence of 10 mM Imidazole for 1 hr at 4°C to pull-down the recombinant ClfA protein.

25 *E.coli expression of His-tagged Clfa:* The Clumping factor-A (ClfA) gene was PCR amplified from the sequence encoding the N-term signal sequence (with the start methionine) to the sequence encoding the glycine in the C-term LPXTG motif from USA300 genomic DNA. The amplified PCR product was then ligated in frame with a c-terminal His tag into the pET 21b(+) *E. coli* expression vector (Novagen). The  
30 resulting construct was transformed into *E.coli* BL21-gold (DE3) Competent Cells (Stratagene) and induced for protein expression for 3.5 hrs with IPTG according to the manufacturer's instructions. The induced *E. coli* culture was lysed by bead beating in Lysis Buffer (150 mM NaCl, 20 mM Tris pH 7.5, 1% triton-X, and Roche protease

inhibitor EDTA-free tablets). Cleared lysates were then incubated with NiNta resin (Qiagen) in the presence of 10 mM Imidazole for 1 hr at 4°C to pull-down the recombinant ClfA protein.

**5 Expression of exogenous ClfA expressed in *E. coli* and incubation with *S. aureus* lysate\_**

*Expression and Purification of S. aureus cell surface SDR proteins ClfA, ClfB, SdrC, SdrD, SdrE in E.coli:* The ClfA, ClfB, SdrC, SdrD and SdrE genes were PCR amplified from the sequence encoding the mature start of the protein to the sequence  
 10 encoding the glycine in the LPXTG motif from USA300 genomic DNA and ligated in-frame with an N-terminal Unizyme tag into the ST239 Vector (Genentech). The constructs were transformed into *E.coli* 58F3 (Genentech), induced for protein expression and subsequently purified.

15 *NiNta capture of NT Unizyme tagged SDR proteins:* 500ug of purified N-terminal Unizyme tagged SDR proteins (ClfA, ClfB, SdrC, SdrD, SdrE) were diluted in PBS containing protease inhibitors (EDTA-free) and incubated with NiNta resin (Qiagen) for 1.5 hr at 4°C. NiNta resin with the captured Unizyme tagged SDR protein was then washed once with wash buffer (50 mM NaH<sub>2</sub>PO<sub>4</sub>, 300mM NaCl; pH  
 20 8.0).

*Modification of E.coli produced SDR proteins by S. aureus lysate:* A 25 ml culture was started from an overnight culture of ΔPan Sdr mutant (ClfA-ClfB-SdrCDE-null; gift of Tim Foster, Trinity College Dublin) Newman *S. aureus* (starting  
 25 OD<sub>600</sub> of 0.15) and grown in TSB for 3 hrs (exponential phase) 37°C, 200 rpm. The exponential phase culture was then resuspended in 1 ml of PBS and lysed with 200 ug/ml lysostaphin in the presence of 250 units of Benzonase Nuclease (Novagen) at 37°C for 30 minutes. The lysates were cleared of debris by spinning down at maximum speed in a micro-centrifuge for 10 minutes at 4°C. Modification of NiNta  
 30 captured *E.coli* SDR protein was carried out by incubation with *cleared* ΔPan Sdr mutant *S. aureus* lysates for 1 hr at 37°C.

*Western Blotting of modified E.coli SDR protein:* Non-modified or modified NiNta captured *E.coli* SDR protein samples were then washed 3x with wash buffer (50 mM NaH<sub>2</sub>PO<sub>4</sub>, 300mM NaCl, 10 mM Imidazole; pH 8.0), prepared for Western Blotting and run on an 8% Tris Glycine Gel (Invitrogen). Western blots were blotted  
5 with either the rF1 antibody or an anti-Unizyme antibody (Genentech).

### Identification of SDR domain as antigen for rF1

*S. aureus* expression of MBP-SD Constructs: The maltose binding protein (MBP) gene was PCR amplified from the pMAL-c5x vector (New England BioLabs  
10 [NEB], Ipswich, MA, USA) from the sequence encoding the start of the mature protein until the sequence encoding the end of the Factor Xa cleavage site. The varying lengths of c-terminal His tagged SD (SD, SDS, DSD, SDSD, SDSDS, SDSDS) were synthesized as single stranded oligonucleotides and annealed together to make double stranded dna. The Sdr region of the ClfA gene was PCR amplified from the sequence  
15 encoding the beginning (560D) of the Sdr region and included up to either the sequence encoding 618A or 709S of the SD region followed by the dna sequence coding for a His Tag from the respective plasmids pTet.ClfA.SD618A or pTet.ClfA.SD709S (Genentech). As a control, the sequence encoding the A domain of the ClfA gene from the beginning of the mature protein until the sequence encoding the end of the A  
20 domain (538G) followed by the sequence coding for a His Tag was PCR amplified from the plasmid pTet.ClfA.Adom.538G (Genentech). The MBP insert along with one of the various SD inserts or ClfA A domain were ligated into the pTet *S.aureus* expression vector (pSAS10 from Genentech). The resulting constructs were then electroporated into the *S. aureus* RN4220  $\Delta$  sortase (sortase deletion mutant strain in the RN4220  
25 background).

A 20 ml culture of either the electroporated RN4220  $\Delta$  sortase or RN4220  $\Delta$  sortase *empty* (not carrying a pTet expression vector) was inoculated from an overnight culture (starting OD<sub>600</sub> of 0.15), grown for 1 hr in trypticase soy broth (TSB)  
30 supplemented with glucose (2 g/L) and then induced for protein expression for 2 hrs with anhydrotetracycline (200 ng/ml). At the end of the induction period, the *S. aureus* culture was resuspended in Column Buffer (150 mM NaCl, 20mM Tris pH 7.5 and Roche protease inhibitor EDTA-free tablets) and lysed with 200 ug/ml lysostaphin

in the presence of 250 units of Benzonase Nuclease (Novagen) at 37°C for 30 minutes. The lysates were cleared of debris by spinning down at maximum speed in a micro-centrifuge for 10 minutes at 4°C. The cleared lysates were then incubated with amylose resin (NEB) along with a final EDTA concentration of 1mM for 1.5 hrs at 4°C  
 5 to capture the expressed MBP-SD proteins.

*Western Blotting of S. aureus expressed MBP-SD Constructs:* Amylose resin with the captured MBP-SD proteins were washed three times with Column Buffer, further prepared for Western blotting analysis and run on an 8% Tris-glycine gel.  
 10 Western blots were blotted with either the rF1 antibody, an anti-penta His antibody (Qiagen) or an anti-MBP antibody (NEB).

## RESULTS

15

### **rF1 reacts to a unique family of SDR (Ser-Asp-repeat) proteins in *S. aureus* and *S. epidermidis***

A commercial teichoic acid preparation and cell wall lysate (WTA) of *S. aureus* (USA300 strain) was tested for binding to rF1 after immunoprecipitation. rF1  
 20 binds to several components of the commercial teichoic acid preparation (figure 6A, left panel) and of the cell wall lysate of *S. aureus* (figure 6B, left panel). Using mass spectrometry these components of the WTA preparation and cell wall lysate were identified as ClfA (SdrA), ClfB (SdrB), SdrC, SdrD and SdrE (figure 6A, right panel and figure 6B, right panel)

25

A cell wall lysate of *S. epidermidis* was tested for binding to rF1 after immunoprecipitation. Figure 6C (left panel) shows binding of rF1 to several components of a cell wall lysate of *S. epidermidis*. These components were not identified with a control antibody. Using mass spectrometry these cell wall components were identified as SdrF, SdrG and SdrH (figure 6C right panel).

30

### **Exogenous ClfA expression in *S. aureus* and *E. coli***

Exogenous ClfA expressed in *S. aureus* is reactive to rF1, whereas ClfA expressed in *E. coli* was not (figure 7A). However, incubation of *E. coli* expressed Sdr

proteins ClfA (SdrA), ClfB (SdrB), SdrC, SdrD and SdrE with *S. aureus* lysate regained rF1 reactivity (figure 7B).

#### **rF1 binds to SDR domains expressed in *S. aureus***

5           rF1 antibody binds to ClfA Sdr regions consisting of the ClfA 560D-618S and ClfA 560D-709S (figure 8) expressed in *S. aureus*. rF1 does not bind to the A-domain of ClfA or to small peptide sequences consisting of up to three SD repeats.

#### 10    Example 4

#### METHODS

##### **Cloning of the variable regions of rF1 into pRK vector**

Phusion DNA polymerase, restriction enzymes EcoRV, KpnI, PvuII, ApaI, AgeI, and AhdI, T4 DNA ligase were purchased from New England BioLabs, Ipswich, MA, USA. Pfu DNA polymerase, Quick change II Site-Directed Mutagenesis Kit were purchased from Stratagene/Agilent Technologies, Santa Clara, California, USA. 2% agarose gel was purchased from Invitrogen, Carlsbad, California, USA. pRK vectors pRK.LPG3.HuKappa and pRK.LPG4.HumanHC were obtained from  
20   Genentech/Roche, South San Francisco, California, USA.

The variable domains of heavy and light chains of rF1 Mab from the pCPEO vectors were placed into the pRK mammalian expression vectors. Polymerase chain reaction (PCR) was performed in a total volume of 50 µl using Pfu DNA polymerase according to standard PCR procedures. V<sub>H</sub> was amplified with the primers YiHCF) 5'-ATG GCT GAG GTG CAG CTG GTG GAG TCT G-3' (SEQ ID NO:18) and YiHCR2 5'-GAA CAC GCT GCG GCC CTT GGT GCT GGC ACT CGA GAC TGT GAC CAG GGT GCC AGG T\*CC CCA G-3' (SEQ ID NO:19) (the restriction sites of PvuII and ApaI are underlined and the \* indicates the single nucleotide G to T change to eliminate the internal ApaI site) and V<sub>L</sub> was amplified with the primers YiLCF 5'-CGG CTC GAC CGA TAT CCA GCT GAC CCA GAG-3' (SEQ ID NO:20) and YiLCR 5'-GAT TTC CAG CTT GGT ACC CTG GCC G-3' (SEQ ID NO:21) (the EcoRV and KpnI are underlined). Unique PCR products with 393 (V<sub>H</sub>) and 328 (V<sub>L</sub>) bp, respectively, were

directly digested by PvuII and ApaI for V<sub>H</sub>, EcoRV and KpnI for V<sub>L</sub>, followed by Gel purification (Invitrogen, Catalog# K2100-12). V<sub>H</sub> and V<sub>L</sub> were individually ligated into pRK vector fragments of pRK/PvuII, ApaI for Heavy chain and pRK/EcoRV, KpnI for light chain using T4 DNA ligase. The DNA plasmids were confirmed by restriction enzyme digestion patterns, i.e. rF1V<sub>H</sub> released ~300 bp and 5.8 kb bands by AgeI, whereas rF1V<sub>L</sub> shown 2.3 and 3.1 kb bands by AhdI on 2% agarose gel.

### Chemical stress testing

By comparing antibody primary sequence data to experimentally observed degradation events, it has become clear that certain sequence motifs may be prone to degradation (i.e. aspartate isomerization at DD, DG, and DS sequences and asparagine deamidation at NG sequences). If such a degradation “hot spot” appears in the CDR of an antibody, binding and potency may be negatively impacted. For molecules containing hot spots, chemical stress testing provides a way to assess the susceptibility of these motifs to degradation by putting the antibody into a platform formulation buffer and comparing a control sample to one stressed at 40°C for two weeks. If degradation is observed the primary sequence can be re-engineered to remove the hot spot.

After the sample is stressed for two weeks at 40°C, a variety of analytical assays are performed to assess where and how much degradation occurred. An imaged capillary isoelectric focusing (icIEF) analysis was performed to examine charge variants and the intact and reduced antibody mass was verified using mass spectrometry, and an LC-MS/MS peptide map was performed to obtain site-specific degradation information.

### Mutagenesis

The rF1 pRK plasmids underwent a series of site-directed mutagenesis to stabilize the rF1 Mab by N (AAC) 53S (AGC) in heavy chain CDR2 with using FHV 5'-GGT GGC CAG CAT CAA CAG CGG CAA CAA CCC CTA CTA CG-3' (SEQ ID NO:22) and RHV 5'-CGT AGT AGG GGT TGT TGC CGC TGT TGA TGC TGG CCA CC-3' (SEQ ID NO:23) (mutagenesis site is underlined) via Quik change II Site-Directed Kit. The mutagenesis variant was sequenced.



RESULTS

5           The primary sequence of antibody rF1 contained one potential  
 asparagine deamidation site in light chain CDR2: NNGNN (SEQ ID NO:24).  
 Stress testing revealed an increase of deamidation in stressed samples at N53  
 (numbering according to Kabat, 1991). Site-directed mutagenesis was performed  
 to stabilize the rF1 Mab by N (AAC, (SEQ ID NO:25)) to 53S (AGC, (SEQ ID  
 10 NO:26)) substitution in heavy chain CDR2. Sequencing of the mutagenesis variant  
 confirmed an N53S mutation.

Example 5

15

**Development of Cys variants for antibody-drug conjugate (ADC)  
 applications**

The rF1 pRK plasmids underwent a series of site-directed mutagenesis with  
 oligos of rF1pRK.LC(205/210)VCF (468075) 5'-GGG CCT GAG CTC GCC CTG CAC  
 20 AAA GAG CTT CAA CAG-3' (SEQ ID NO:27) and rF1pRK.LC(205/210)VCR  
 (468076) 5'-CTG TTG AAG CTC TTT GTC CAG GGC GAG CTC AGG CCC-3' (SEQ  
 ID NO:28) (Cys mutant is underlined) to generate the light chain linkers of rF1  
 thioMab, and rF1pRK.HCN53S.A121CF (468464) 5'-CTG GTC ACA GTC TCG AGT  
TGC AGC ACC AAG GGC CCA TC-3' (SEQ ID NO:29) and  
 25 rF1pRK.HCN53S.A121CR (468465) 5'-GAT GGG CCC TTG GTG CTG CAA CTC GAG  
 ACT GTG ACC AG-3' (SEQ ID NO:30) (Cys mutant is underlined) to make the  
 heavy chain linkers of rF1 thioMab via the Stratagene's Site-Directed method. Light  
 chain V205C and heavy chain A114C were confirmed by sequencing of the variants  
 (figure 9).

30

Brief description of the drawings

**Figure 1:** Heavy chain and light chain sequences of antibody F1

5 **Figure 2:** F1 antibody binds to LTA preparations from several Gram-positive bacteria. (a) LTA preparations were derived from Sigma and tested in a capture ELISA with a mouse polyclonal anti-LTA or (b) a highly purified set of LTA preparations derived from W. Fischer. D25, a human anti-RSV antibody was used as non-specific negative control and a mouse monoclonal anti-LTA antibody as a positive control.

10 **Figure 3:** Recombinant F1 antibody binds to *S. aureus* but not to *S. pneumoniae*. (a) Bacteria were incubated with F1 antibody, or a control IgG (D25, a human anti-RSV antibody) or without first antibody (IgG-PE only). After washing the secondary antibody was added (IgG-PE). (b) 6 clinical isolates were tested in two separate experiments for the binding of F1. Tested were a PVL+ strain (SA-1), 3 regular (SA-2 SA-3 and SA-4), and 2 MRSA strains (SA-5 and SA-6).

20 **Figure 4:** (a) Binding of rF1 antibody to 14 *S. aureus* strains. (b) rF1 antibody binds to *S. epidermidis* but not to *Bacillus subtilis*, *Enterococcus faecalis*, *Listeria monocytogenes* and *Streptococcus pyogenes*.

25 **Figure 5:** (a) rF1 antibody binds to MRSA in different growth stages, Iso C: isotype control, Med: media control (b) rF1 antibody binds to MRSA isolated from infected tissue.

30 **Figure 6:** rF1 antibody binds to SDR proteins. (a) Immunoprecipitation (IP) of a commercial teichoic acid preparation of *S. aureus* (Wood 46 strain) with rF1 or isotype control antibody, followed by Western blotting with rF1 antibody (left) and mass spectrometry analysis of fragments from the WTA preparation bound by rF1 antibody (right), (b) Immunoprecipitation (IP) of cell wall lysate of *S. aureus* (USA300 strain) with rF1 or control antibody, followed by Western blotting (WB) with rF1 antibody (left) and mass spectrometry analysis of cell wall fragments (USA300 strain) bound by

rF1 antibody (right) (c) Immunoprecipitation of cell wall lysate of *S. epidermidis* with rF1 or isotype control antibody, followed by Western blotting with rF1 antibody (left), mass spectrometry analysis of cell wall fragments bound by rF1 antibody (right).

5 **Figure 7:** Binding of rF1 to SDR proteins expressed in *S. aureus* and *E. coli*. (a) Western blotting of *S. aureus* and *E. coli* lysates containing overexpressed His-tagged ClfA using anti-His (left) and rF1 (right) antibody. (b) Western Blotting of *E. coli* cell lysates containing his-tagged ClfA, ClfB, SdrC, SdrD and SdrE following incubation with *S. aureus* lysate with rF1 (top) or anti-His (bottom) antibody.

10

**Figure 8:** rF1 binds to SDR domains expressed by *S. aureus*. Constructs expressed by *S. aureus* and tested for binding to rF1 (left), Western blots of *S. aureus* lysates containing the expressed constructs with anti-MBP (maltose binding protein), anti-His and rF1 antibody (right).

15

**Figure 9:** Sequences of heavy chain A114C (a) and light chain V205C (b) variants of antibody rF1. Numbering according to Kabat (1991), boxes: CDRs.

20

References

- Diehl S.A. et al. J Immunol 180, 4805-4815 (2008)
- Greenberg J.W. et al. Infection and Immunity 64, 3318-3325 (1996)
- 5   Jaleco A.C. et al. Blood 94, 2637-2646 (1999)
- Kabat et al. Sequences of Proteins of Immunological interest, 5<sup>th</sup> Ed. Public Health Service, National Institute of Health, Bethesda, MD (1991)
- Keller R. et al. Infect Immun 60, 3664-3672 (1992)
- Kwakkenbos M et al. Nat Med accepted for publication (2009)
- 10   Moran et al. NEMJ 355, 666-674 (2006)
- Polotsky V.Y. et al. Infection and Immunity 64, 380-383 (1996)
- Scheeren F.A. et al. Nat Immunol 6, 303-313 (2005)
- Shvarts A. et al. Genes Dev 16, 681-686 (2002)
- Weidenmaier C. et al. Nat Rev Microbiol 6, 276-287 (2008)

**AMENDED CLAIMS**

**received by the International Bureau on 31 May 2011 (31.05.2011).**

- 1) An isolated antibody capable of binding to whole gram positive bacteria selected from the group consisting of *S. aureus*, *S. faecalis*, *S. pyrogen*, *S. epidermidis*, and *B. licheniformis* but does not bind to *S. pneumonia* or *S. mutans*.
- 2) The antibody of claim 1, wherein said antibody is human.
- 5 3) The antibody of claim 1 wherein the *S. aureus* is a methicillin-resistant *S. aureus* (MRSA).
- 4) The antibody of claim 1 wherein the *S. aureus* is a methicillin-sensitive *S. aureus* (MSSA).
- 10 5) The antibody of claim 1 wherein the *S. aureus* is a vancomycin intermediate sensitive *S. aureus* (VISA).
- 6) The antibody of claim 1 wherein the antibody does not bind to *L. lactis*, *L. garvieae*, *B. bifidum*, *M. luteus*, *L. casei*, *L. mesenteroides*, *L. welshimeri*, *E. hirae*, *L. raffinolactis*, *S. mutans* or *S. pneumoniae*.
- 7) An isolated antibody comprising:
  - 15 a) a heavy chain CDR1 sequence RFAMS (SEQ ID NO:1), and
  - b) a heavy chain CDR2 sequence SINNGNNPYYARSVQY (SEQ ID NO:2), and
  - c) a heavy chain CDR3 sequence DHPSSGWPTFDS (SEQ ID NO:3).
- 8) The antibody of claim 7 further comprising a variable light chain.
- 9) An isolated antibody comprising:
  - 20 a) a light chain CDR1 sequence RASENVGDWLA (SEQ ID NO:4), and
  - b) a light chain CDR2 sequence KTSILES (SEQ ID NO:5), and
  - c) a light chain CDR3 sequence QHYXRFPYT(SEQ ID NO:6), wherein X is I or M.

- 10) The antibody of claim 9 further comprising a variable heavy chain.
- 11) The antibody of claim 7 further comprising:
- a) a light chain CDR1 sequence RASENVGDWLA (SEQ ID NO:4), and
  - b) a light chain CDR2 sequence KTSILES (SEQ ID NO:5), and
  - 5 c) a light chain CDR3 sequence QHYXRFPYT(SEQ ID NO:6), wherein X is I or M.
- 12) The antibody of claim 9 or 11 wherein the light chain CDR3 sequence is QHYIRFPYT(SEQ ID NO:6).
- 13) The antibody of claim 9 or 11 wherein the light chain CDR3 sequence is
- 10 QHYMRFPYT(SEQ ID NO:6).
- 14) The antibody of claim 7 wherein the antibody comprises a variable heavy chain sequence comprising:
- a) framework 1 (FW1) which has at least 90% identity to EVQLLES GGGLVQPGGSLRLSCAASGFTLS (SEQ ID NO: 37);
  - 15 b) framework 2 (FW2) which has at least 90% identity to WVRQAPGRGLEWVA (SEQ ID NO: 39);
  - c) framework 3 (FW3) which has at least 90% identity to RFTVSRDVSQNTVSLQMNNLRAEDSATYFCAK (SEQ ID NO: 41); and
  - d) framework 4 (FW4) which has at least 90% identity to WPGTLVTVSS (SEQ
  - 20 ID NO: 43).
- 15) The antibody of claim 14 wherein the antibody has a variable heavy chain sequence comprising:
- a) framework 1 (FW1) which has the sequence of EVQLLES GGGLVQPGGSLRLSCAASGFTLS (SEQ ID NO: 37);
  - 25 b) framework 2 (FW2) which has the sequence of WVRQAPGRGLEWVA (SEQ ID NO: 39);

- c) framework 3 (FW3) which has the sequence of  
RFTVSRDVSQNTVSLQMNNLRAEDSATYFCAK (SEQ ID NO: 41); and
- d) framework 4 (FW4) which has the sequence of WGPGLTVTVSS (SEQ ID NO: 43).

5 16) The antibody of claim 7 wherein the antibody comprises a variable heavy chain sequence comprising a sequence which has at least 90% sequence identity to the sequence  
EVQLLES G GGLVQP G GSLRLSCAASGFTLSRFAMSWVRQAPGRGLEWVASINN  
GNNPYYARSVQYRFTVSRDVSQNTVSLQMNNLRAEDSATYFCAK DHPSSGWP  
10 TFDSWGPGLTVTVSS (SEQ ID NO:7).

17) The antibody of claim 16 wherein the antibody comprises a variable heavy chain having a sequence of  
EVQLLES G GGLVQP G GSLRLSCAASGFTLSRFAMSWVRQAPGRGLEWVASINN  
GNNPYYARSVQYRFTVSRDVSQNTVSLQMNNLRAEDSATYFCAK DHPSSGWP  
15 TFDSWGPGLTVTVSS (SEQ ID NO:7).

18) The antibody of claim 9 wherein the antibody has a variable light chain sequence comprising:

- a) framework 1 (FW1) which has at least 90% identity to  
DIQLTQSPSALPASVGDRVSITC (SEQ ID NO: 47);
- 20 b) framework 2 (FW2) which has at least 90% identity to WYRQKPGKAPNLLIY (SEQ ID NO: 49);
- c) framework 3 (FW3) which has at least 90% identity to  
GVPSRFS GSGSGTEFTLTISSLQPDDFATYYC (SEQ ID NO: 51); and
- d) framework 4 (FW4) which has at least 90% identity to FGQG TKLEIKRTV  
25 (SEQ ID NO: 53).

19) The antibody of claim 18 wherein the antibody has a variable light chain sequence comprising:

- a) framework 1 (FW1) which has the sequence of  
DIQLTQSPSALPASVGDRVSITC (SEQ ID NO: 47);
- b) framework 2 (FW2) which has the sequence of WYRQKPGKAPNLLIY (SEQ ID  
NO: 49);
- 5 c) framework 3 (FW3) which has the sequence of  
GVPSRFSGSGSGTEFTLTISLQPDFFATYYC (SEQ ID NO: 51); and
- d) framework 4 (FW4) which has the sequence of FGQGTKLEIKRTV (SEQ ID  
NO: 53).
- 20) The antibody of claim 18 wherein the antibody has a variable light chain sequence  
10 comprising:
- a) framework 1 (FW1) which has the sequence of  
DIQLTQSPSALPASVGDRVSITC (SEQ ID NO: 47);
- b) framework 2 (FW2) which has the sequence of WYRQKPGKAPNLLIY (SEQ ID  
NO: 49);
- 15 c) framework 3 (FW3) which has the sequence of  
GVPSRFSGSGSGTEFTLTISLQPDFFATYYC (SEQ ID NO: 51); and
- d) framework 4 (FW4) which has the sequence of FGQGTKVEIKRTV (SEQ ID  
NO: 59)
- 21) The antibody of claim 9 wherein the antibody comprises a variable light chain  
20 sequence which has at least 90% sequence identity to the sequence  
DIQLTQSPSALPASVGDRVSITCRASENVGDWLA WYRQKPGKAPNLLIYKTSIL  
ESGVPSRFSGSGSGTEFTLTISLQPDFFATYYCQHYXRFPTYTFGQGTKVEIKRT  
V, wherein X is I or M (SEQ ID NO:11).
- 22) The antibody of claim 21 wherein the antibody comprises a variable light chain  
25 having a sequence of  
DIQLTQSPSALPASVGDRVSITCRASENVGDWLA WYRQKPGKAPNLLIYKTSIL



ESGVPSRFSGSGSGTEFTLTISLQPDFFATYYCQHYXRFPYTFGQGTKVEIKRT  
V, wherein X is I or M (SEQ ID NO:11).

23) The antibody of claim 1 wherein antibody comprises:

- a) a variable heavy chain comprising a sequence of  
5 EVQLES GGGLVQPGGSLRLSCAASGFTLSRFAMSWVRQAPGRGLEWVASI  
NNGNNPYYARSVQYRFTVSRDVSQNTVSLQMNNLRAEDSATYFCAKDHPS  
SGWPTFDSWGPGTLVTVSS (SEQ ID NO:7) and
- b) a variable light chain comprising a sequence of  
10 DIQLTQSPSALPASVGDRVSITCRASENVGDWLAWYRQKPGKAPNLLIYKT  
SILESGVPSRFSGSGSGTEFTLTISLQPDFFATYYCQHYXRFPYTFGQGTKV  
EIKRTV, wherein X is I or M (SEQ ID NO:11).

24) The antibody of claim 1 wherein antibody comprises:

- a) a variable heavy chain comprising a sequence of  
15 EVQLVES GGGLVQPGGSLRLSCAASGFTLSRFAMSWVRQAPGRGLEWVASI  
NNGNNPYYARSVQYRFTVSRDVSQNTVSLQMNNLRAEDSATYFCAKDHPS  
SGWPTFDSWGPGTLVTVSS (SEQ ID NO:9)
- b) a variable light chain comprising a sequence of  
20 DIQLTQSPSALPASVGDRVSITCRASENVGDWLAWYRQKPGKAPNLLIYKT  
SILESGVPSRFSGSGSGTEFTLTISLQPDFFATYYCQHYXRFPYTFGQGTKL  
EIKRTV, wherein X is I or M (SEQ ID NO:8).

25) The antibody of claim 1 wherein antibody comprises:

- a) a variable heavy chain comprising a sequence of  
25 EVQLVES GGGLVQPGGSLRLSCAASGFTLSRFAMSWVRQAPGRGLEWVASI  
NNGNNPYYARSVQYRFTVSRDVSQNTVSLQMNNLRAEDSATYFCAKDHPS  
SGWPTFDSWGPGTLVTVSS (SEQ ID NO:9)
- b) a variable light chain comprising a sequence of  
DIQLTQSPSALPASVGDRVSITCRASENVGDWLAWYRQKPGKAPNLLIYKT

SILESGVPSRFSGSGSGTEFTLTISLQPDDEFATYYCQHYXRFPYTFGQGTKL  
EIKRA, wherein X is I or M (SEQ ID NO:10).

26) The antibody of claim 1 wherein antibody comprises:

- a) a variable heavy chain comprising a sequence of  
5 EVQLVESGGGLVQPGGSLRLSCAASGFTLSRFAMSWVRQAPGRGLEWVASI  
NNGNNPYYARSVQYRFTVSRDVSQNTVSLQMNNLRAEDSATYFCAKDHPS  
SGWPTFDSWGPGTLVTVSS (SEQ ID NO:9) and
- b) a variable light chain comprising a sequence of  
10 DIQLTQSPSALPASVGDRVSITCRASENVGDWLAWYRQKPGKAPNLLIYKT  
SILESGVPSRFSGSGSGTEFTLTISLQPDDEFATYYCQHYXRFPYTFGQGTKV  
EIKRTV, wherein X is I or M (SEQ ID NO:11).

27) The antibody of claim 1 wherein antibody comprises:

- a) a variable heavy chain comprising a sequence of  
15 EVQLLES GGGLVQPGGSLRLSCAASGFTLSRFAMSWVRQAPGRGLEWVASI  
NNGNNPYYARSVQYRFTVSRDVSQNTVSLQMNNLRAEDSATYFCAKDHPS  
SGWPTFDSWGPGTLVTVSS (SEQ ID NO:7) and
- b) a variable light chain comprising a sequence of  
20 DIQLTQSPSALPASVGDRVSITCRASENVGDWLAWYRQKPGKAPNLLIYKT  
SILESGVPSRFSGSGSGTEFTLTISLQPDDEFATYYCQHYXRFPYTFGQGTKL  
EIKRTV, wherein X is I or M (SEQ ID NO:8).

28) The antibody of claim 1 wherein antibody comprises:

- a) a variable heavy chain comprising a sequence of  
25 EVQLLES GGGLVQPGGSLRLSCAASGFTLSRFAMSWVRQAPGRGLEWVASI  
NNGNNPYYARSVQYRFTVSRDVSQNTVSLQMNNLRAEDSATYFCAKDHPS  
SGWPTFDSWGPGTLVTVSS (SEQ ID NO:7) and
- b) a variable light chain comprising a sequence of  
DIQLTQSPSALPASVGDRVSITCRASENVGDWLAWYRQKPGKAPNLLIYKT

- c) SILESGVPSRFSGSGSGTEFTLTISLQPDDEFATYYCQHYXRFPYTFGQGTKL  
EIKRA, wherein X is I or M (SEQ ID NO:10).

29) An isolated antibody comprising:

- a) a heavy chain comprising a sequence of SEQ ID NO: 55 and  
5 b) a light chain comprising a sequence of of SEQ ID NO: 57.

30) An isolated antibody comprising:

- a) a heavy chain comprising a sequence of SEQ ID NO: 56 and  
b) a light chain comprising a sequence of of SEQ ID NO: 58.

- 10 31) The antibody according to claim 11, wherein an asparagine at position 53 in the  
variable heavy chain of has been replaced by another amino acid, whereby the  
amino acid numbering is according to Kabat (1991).

- 15 32) The antibody according to claim 31, wherein said asparagine at position 53 is  
replaced with a serine, wherein an alanine at position 114 is replaced with a  
cysteine, and wherein an arginine at position 222 is replaced with a lysine,  
whereby the amino acid numbering is according to Kabat (1991).

- 20 33) The antibody according to claim 11, wherein a valine at variable light chain  
position 205 is replaced with cysteine, an alanine at variable light chain position  
110 is replaced with valine, and a leucine at variable light chain position 104 is  
replaced with a valine, whereby the amino acid numbering is according to Kabat  
(1991).

- 25 34) A composition comprising a functional part of the antibody of any one of claims 1,  
7, 9, or 11 wherein the functional part of an antibody is selected from the group  
consisting of a single domain antibody, a single chain antibody, a nanobody, an  
unibody, a single chain variable fragment (scFv), a Fab fragment and a F(ab')<sub>2</sub>  
fragment

- 35) An isolated antibody that binds to *in vivo*-grown *S. aureus*.
- 36) The antibody of claim 35, wherein said antibody is human.
- 37) An antibody capable of binding an SD-repeat dependent epitope.
- 38) An antibody capable of binding to *S. aureus* ClfA, ClfB, SdrC, SdrD and SdrE.
- 5 39) An antibody which is capable of competing with the antibody according to claim 11 for binding to a *Staphylococcus* species.
- 40) An isolated, synthetic or recombinant nucleic acid sequence encoding for any of the antibodies according to claims 1-33 and 35-39.
- 10 41) An isolated, synthetic or recombinant nucleic acid sequence encoding for heavy chain CDR1, CDR2 or CDR3 or light chain CDR1, CDR2, or CDR3, wherein the sequence is selected from the group consisting of heavy chain CDR1 sequence cgctttgcatgagc (SEQ ID NO:12), heavy chain CDR2 sequence tcgatcaataatgggaataaccatactacgcacggctcgtacaatac (SEQ ID NO:13), heavy chain CDR3 sequence gatcaccctagtagtggtggccaccttgactcc (SEQ ID NO:14), light chain
- 15 CDR1 sequence cgggccagtgaaaacgttggtgactggttgcc (SEQ ID NO:15), light chain CDR2 sequence aagacatctattctagaaagt (SEQ ID NO:16) and light chain CDR3 sequence caacactatatacgtttccgtacact (SEQ ID NO:17).
- 42) An isolated cell comprising the nucleic acid of claim 40.
- 43) An isolated cell comprising the nucleic acid of claim 41.
- 20 44) An antibody or a nucleic acid sequence according to any one of claims 1-33 or 35-41, for use as a medicament and/or prophylactic agent.
- 45) An antibody or a nucleic acid sequence according to any one of claims 1-33 or 35-41, for use as a medicament and/or prophylactic agent for treating and/or preventing a Gram-positive bacterium-related disorder.

- 46) Use of an antibody or a nucleic acid sequence according to any one of claims 1-33 or 35-41 for the preparation of a medicament and/or prophylactic agent for treating and/or preventing a Gram-positive bacterium-related disorder.
- 47) A pharmaceutical composition comprising an antibody or a nucleic acid sequence according to any one of claims 1-33 or 35-41 and a pharmaceutical acceptable carrier, diluent or excipient.
- 48) An isolated or recombinant antibody producing cell capable of producing an antibody according to any one of claims 1-33 or 35-39.
- 49) A method for producing an antibody according to any one of claim 1-33 or 35-39, comprising providing a cell with a nucleic acid sequence according to any one of claims 40-41 and allowing said cell to translate said nucleic acid sequence according to any one of claims 40-41, thereby producing said antibody according to any one of claim 1-33 or 35-39.
- 50) The method according to claim 49, further comprising harvesting, purifying and/or isolating said antibody according to any one of claim 1-33 or 35-39.
- 51) Use of an antibody or a nucleic acid sequence according to any one of claims 1-33 or 35-41 for diagnosis of a *Staphylococcus* infection.
- 52) Use of an antibody or a nucleic acid sequence according to any one of claims 1-33 or 35-41 for detecting *S. aureus* and/or *S. epidermidis*.
- 53) An antibody according to any one of claims 1-33 or 35-39 for use in the diagnosis of a *Staphylococcus* infection.
- 54) A method for isolating *S. aureus* and/or *S. epidermidis* bacteria from a solution using an antibody according to any one of claims 1-33 or 35-39.

**Figure 1****5 aMRSA F1 clone**

NB: CDR numbering according to Kabat et al (1991)

**Heavy chain**

10

Recombined from gene segments:

IGHV3-23\*01

IGHD6-19\*01

IGHJ4\*02

15

AMINO ACID:

Fw1 EVQLLESGGGLVQPGGSLRLSCAASGFTLS

CDR1 RFAMS

Fw2 WVRQAPGRGLEWVA

20 CDR2 SINNGNNPYYARSVQY

Fw3 RFTVSRDVSQNTVSLQMNNLRAEDSATYFCAK

CDR3 DHPSSGWPTFDS

Fw4 WPGTLTVTVSS

25 NUCLEOTIDE:

Fw1 gag gtg caa ctg ttg gag tgg ggg ggg ggc ttg gtg cag ccg ggg ggg tcc ctg aga ctc tcc  
tgt gca gcc tct gga ttc acc ctt agc

CDR1 cgc ttt gcc atg agc

30

Fw2 tgg gtc cgc cag gct cca gga agg gga ctg gaa tgg gtc gca

CDR2 tgg atc aat aat ggg aat aac cca tac tac gca cgg tgg gta caa tac

Fw3 cgc ttc acc gtc tcc cgg gac gtc tcc cag aac act gtg tct ctg cag atg aac aac ctg aga gcc  
gaa gac tgc gcc aca tat ttc tgt gct aaa

CDR3 gat cac cct agt agt ggc tgg ccc acc ttt gac tcc

5

Fw4 tgg ggc ccg gga acc ctg gtc acc gtc tcc tcg

### Light chain

10 Recombined from gene segments:

IGKV1-5\*03

IGKJ2\*01

### AMINO ACID:

15 Fw1 DIQLTQSPSALPASVGDRVSITC

CDR1 RASENVGDWLA

Fw2 WYRQKPGKAPNLLIY

CDR2 KTSILES

Fw3 GVPSRFSGSGSGTEFTLTISSLQPDDFATYYC

20 CDR3 QHYIRFPYT

Fw4 FGQGTKLEIKRTV

### NUCLEOTIDE:

Fw1 gac atc cag ttg acc cag tct cct tcc gcc ctg cct gca tct gtg gga gac aga gtc agc atc act

25

tgt

CDR1 cgg gcc agt gaa aac gtt ggt gac tgg ttg gcc

Fw2 tgg tat cgg cag aaa ccg ggg aaa gcc cct aat ctt ctc atc tat

30

CDR2 aag aca tct att cta gaa agt

Fw3 ggg gtc cca tca agg ttc agc ggc agt ggg tct ggg aca gaa ttc act ctc acc atc agc agc  
ctg cag cct gat gat ttt gca act tat tac tgt

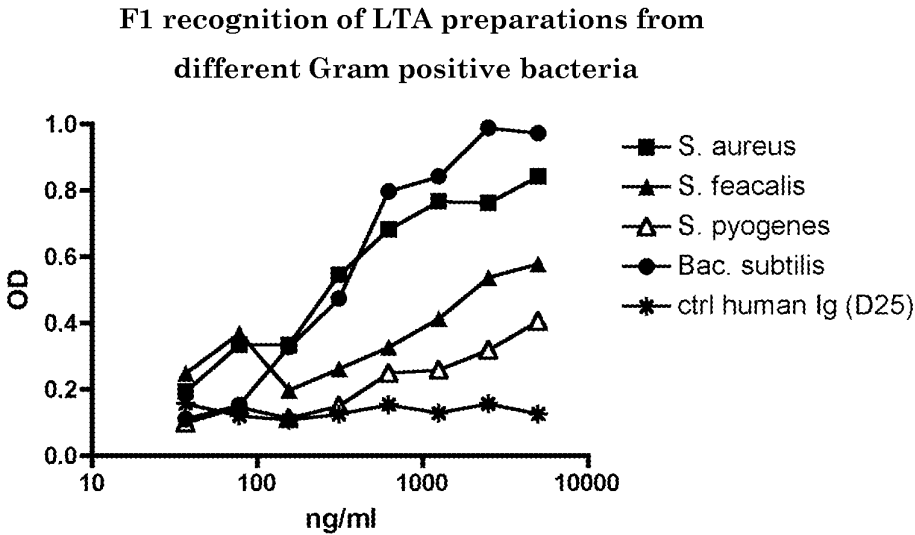
CDR3 caa cac tat ata cgt ttc ccg tac act

5

Fw4 ttt ggc cag ggg acc aag ctg gag atc aaa cga act gtg



Figure 2A



5

Figure 2B

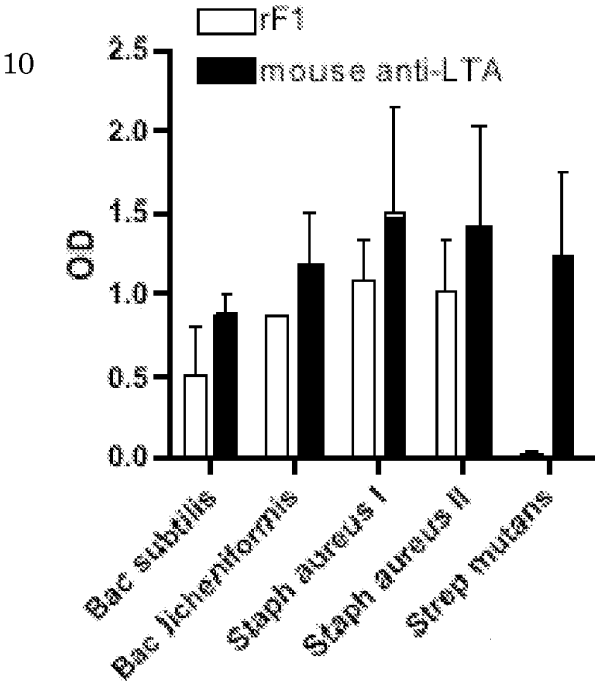


Figure 3A

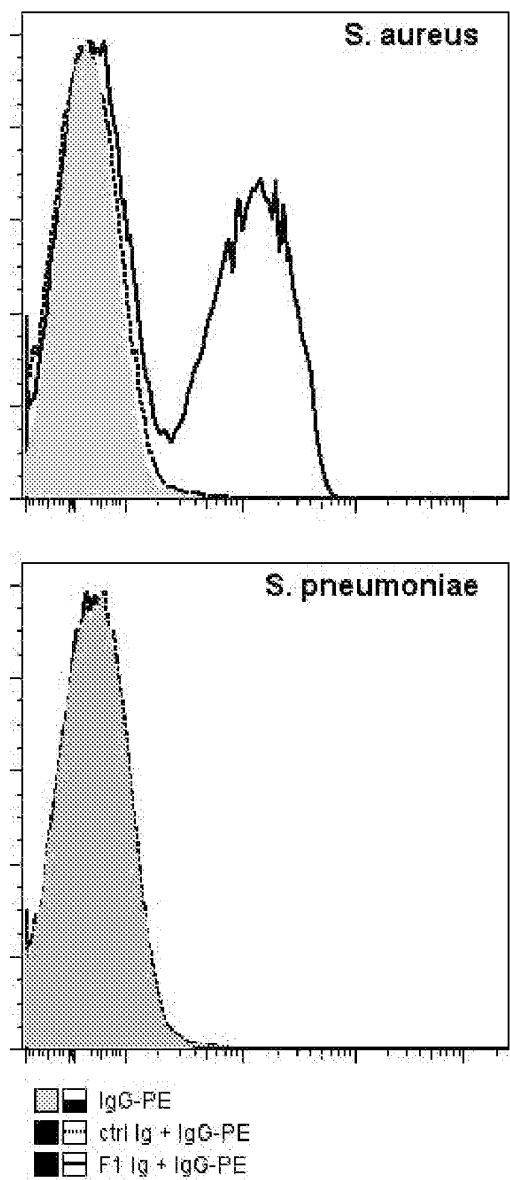
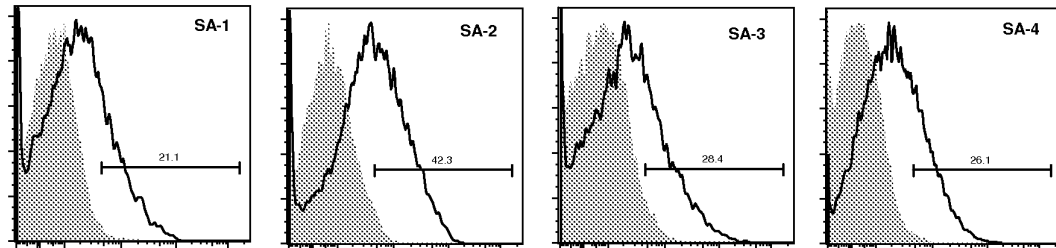


Figure 3B



TB 02 Juli 2009 SA clinical strains

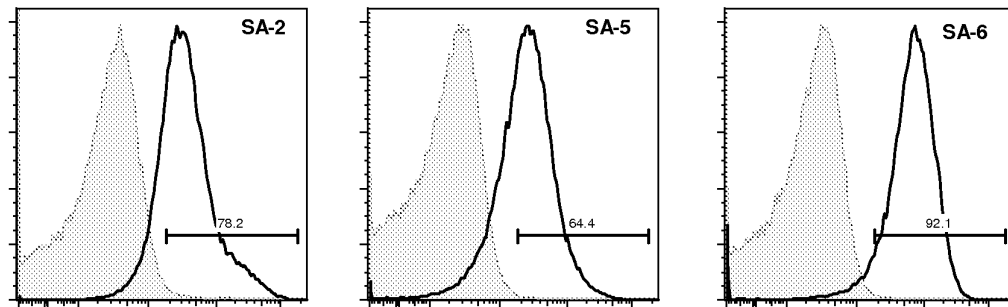


Figure 4A

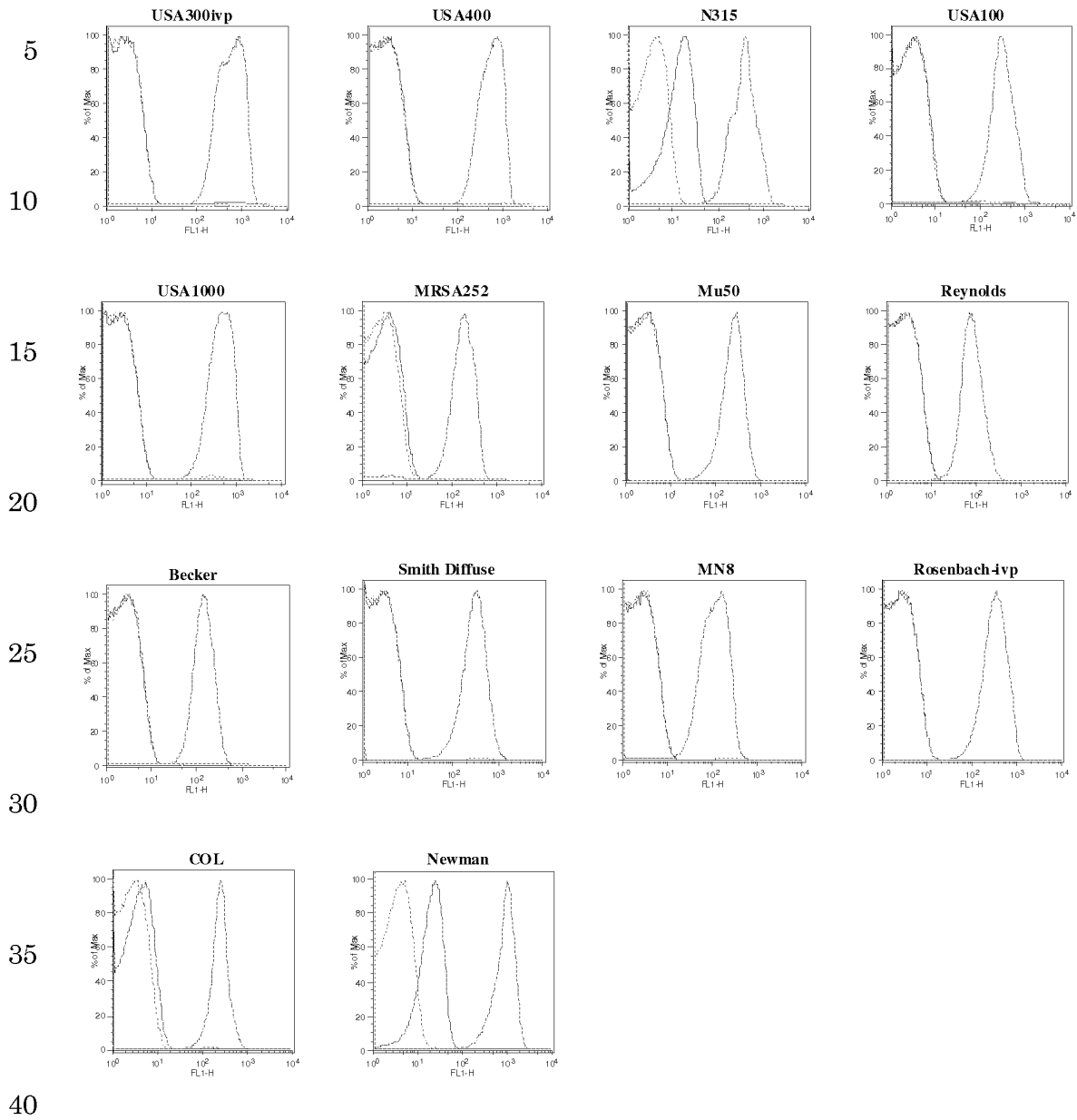


Figure 4B

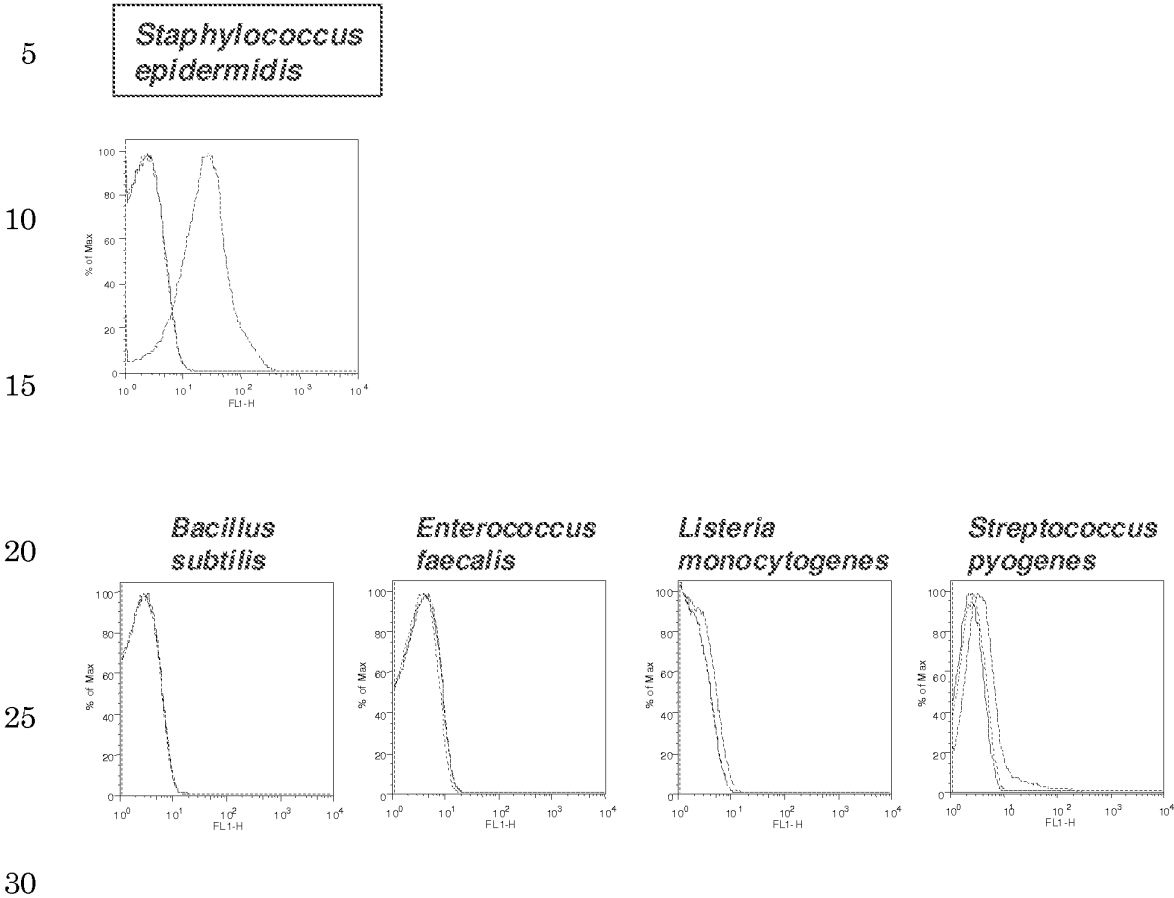


Figure 5

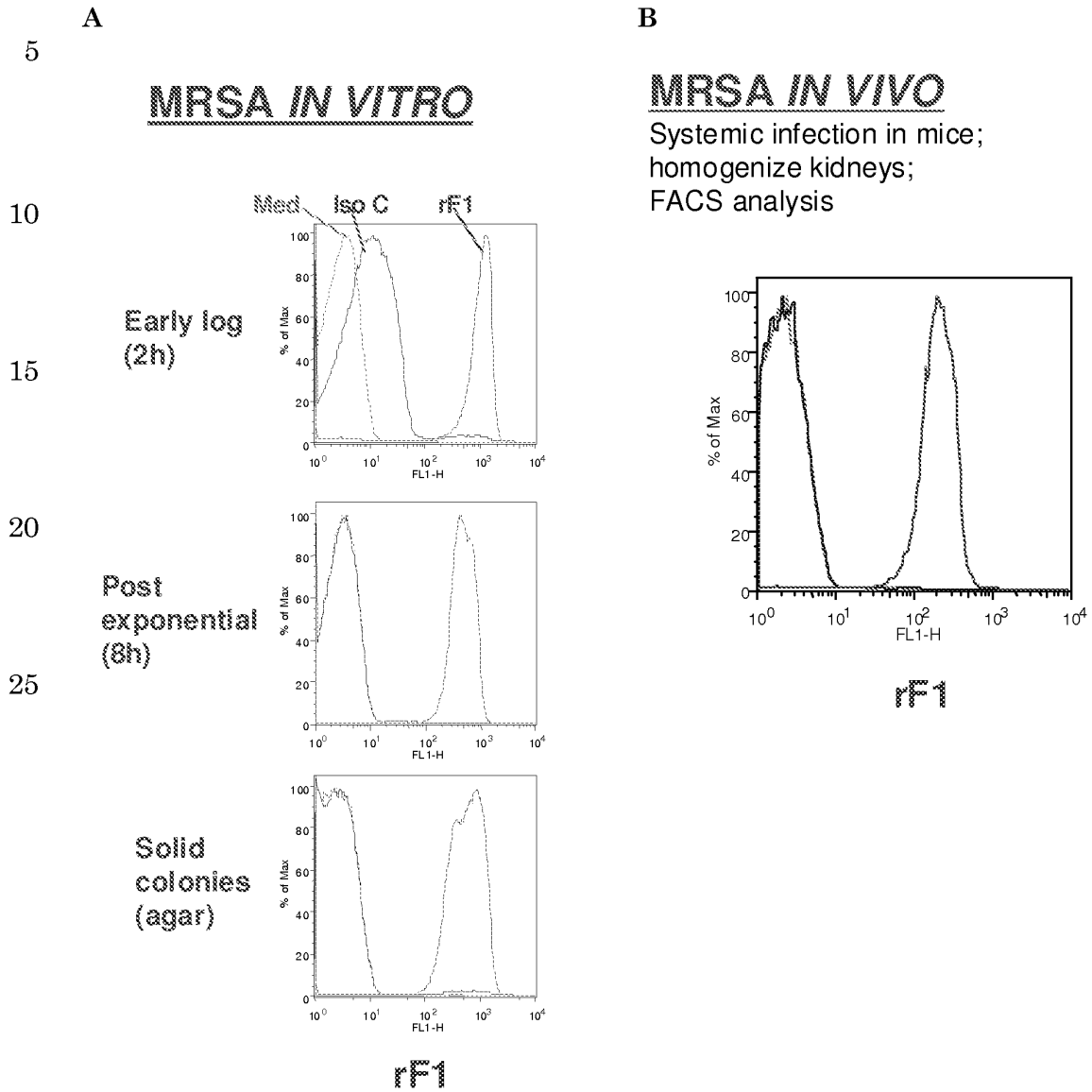


Figure 6A

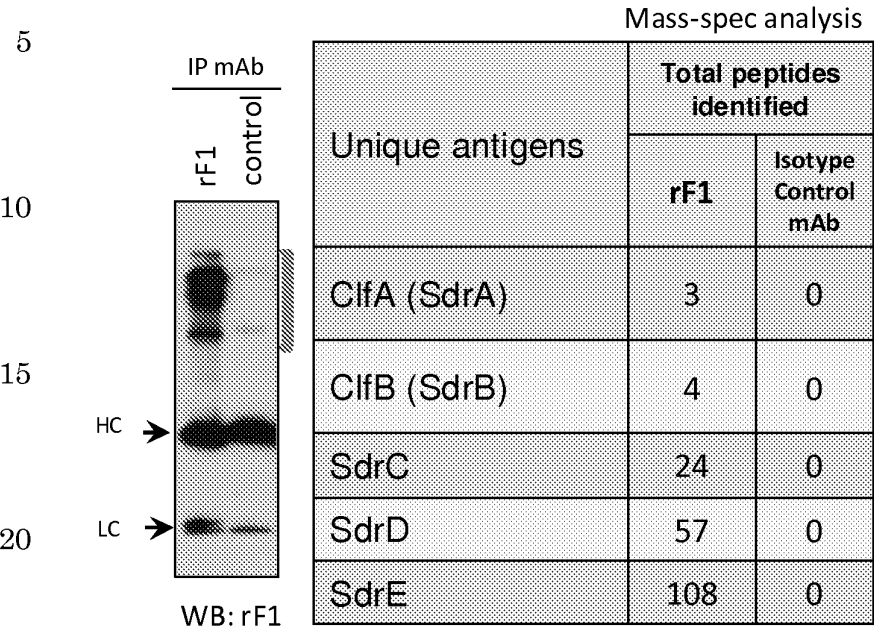


Figure 6B

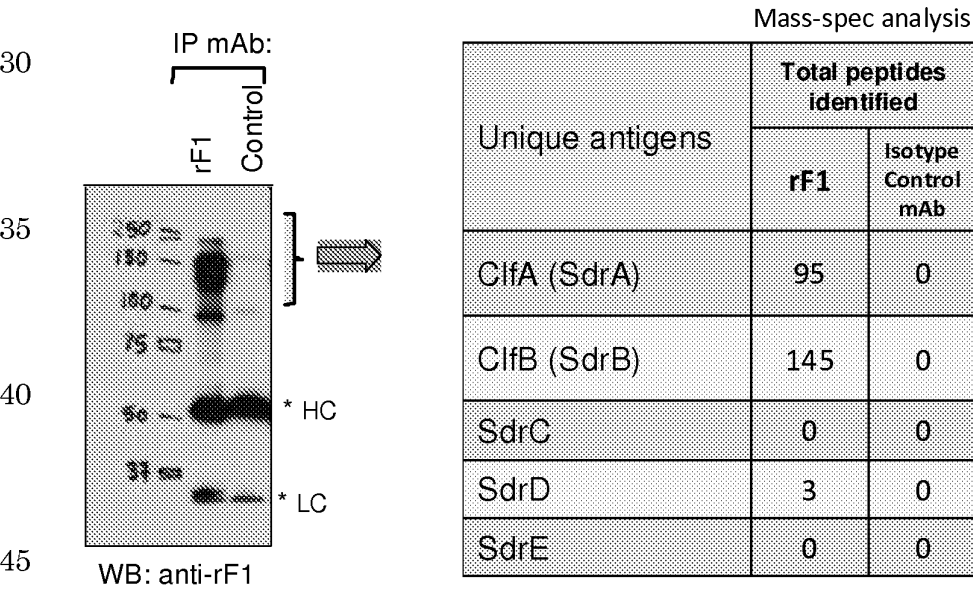
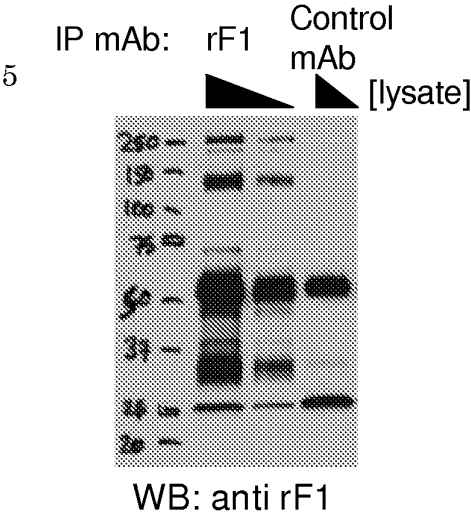


Figure 6C



Mass-spec analysis: Unique/Total peptides

	rF1		ITC52 *	
	U	T	U	T
<u>SdrF</u>	27	100		0
<u>SdrG</u>	8	25		0
<u>SdrH</u>	3	4		0



Figure 7A

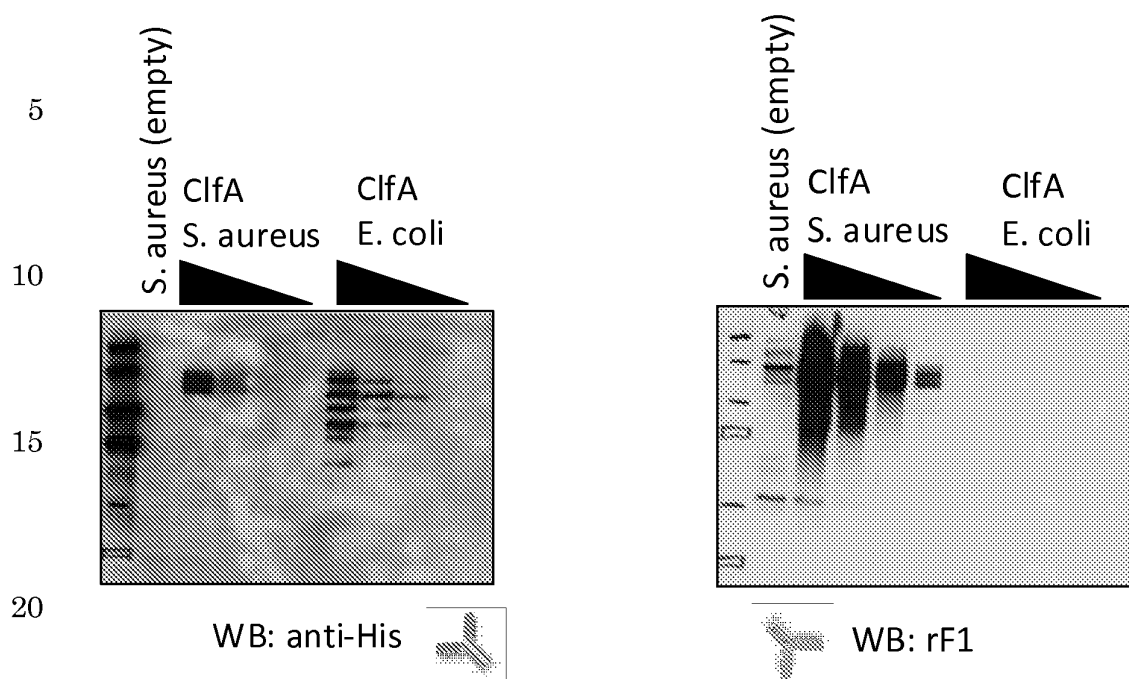


Figure 7B

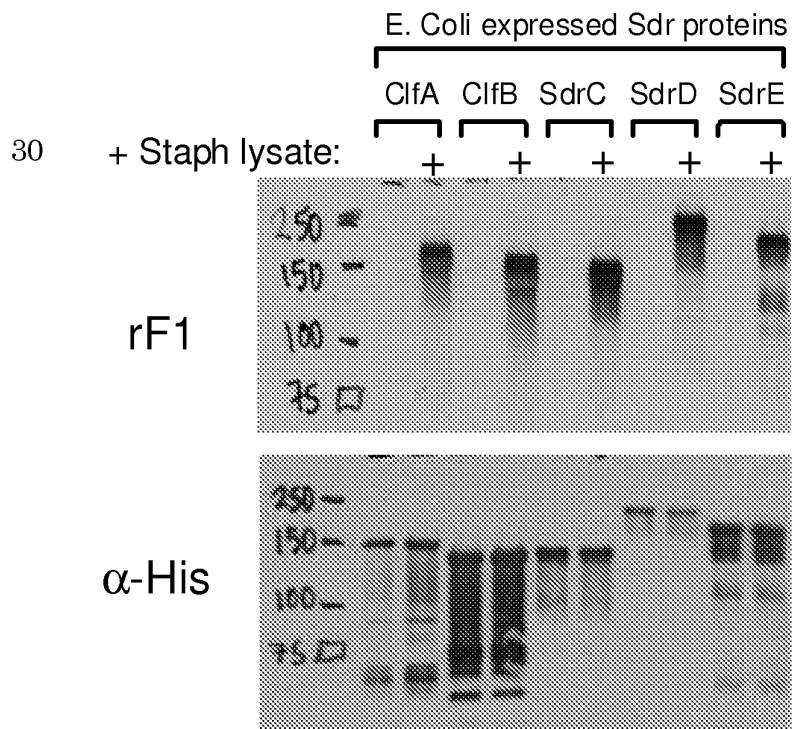


Figure 8

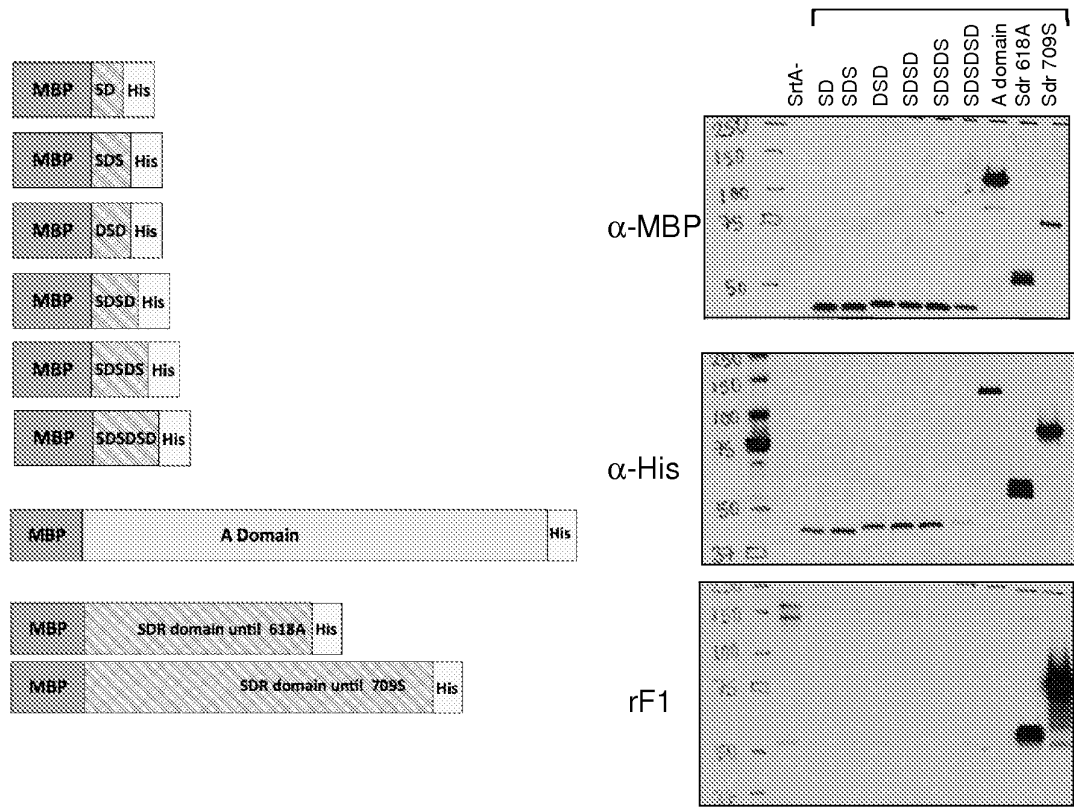


Figure 9A

rF1 heavy chain rF1 A114C	1	2	3	4	5	6	7	8	9	10	11	12	13	14	15	16	17	18	19	20	21	22	23	24	25	26	27	28	29	30	31	32	33	34	
	E	V	Q	L	V	E	S	G	G	G	L	V	Q	P	G	G	S	L	R	L	S	C	A	A	S	G	F	T	L	S	R	F	A	M	
rF1 heavy chain rF1 A114C	35	A	B	36	37	38	39	40	41	42	43	44	45	46	47	48	49	50	51	52	A	B	C	53	54	55	56	57	58	59	60	61	62	63	
	S	.	.	W	V	R	Q	A	P	G	R	G	L	E	W	V	A	S	I	N			N	G	N	N	P	Y	Y	A	R	S	V		
rF1 heavy chain rF1 A114C	64	65	66	67	68	69	70	71	72	73	74	75	76	77	78	79	80	81	82	A	B	C	83	84	85	86	87	88	89	90	91	92	93	94	
	Q	Y	R	F	T	V	S	R	D	V	S	Q	N	T	V	S	L	Q	M	N	N	L	R	A	E	D	S	A	T	Y	F	C	A	K	
rF1 heavy chain rF1 A114C	95	96	97	98	99	100	A	B	C	D	E	F	G	H	I	J	K	101	102	103	104	105	106	107	108	109	110	111	112	113	A	B	C	D	E
	D	H	P	S	S	G	W	P	T	.	.	.	.	.	.	.	F	D	S	W	G	P	G	T	L	V	T	V	S	S					
rF1 heavy chain rF1 A114C	114	115	116	117	118	119	120	121	122	123	124	125	126	127	128	129	130	131	132	133	134	135	136	137	138	139	140	141	142	143	144	145	146	147	
	A	S	T	K	G	P	S	V	F	P	L	A	P	S	S	K	S	.	.	T	S	G	G	T	A	A	L	G	C	L	V	K	D	Y	
rF1 heavy chain rF1 A114C	148	149	150	151	152	153	154	155	156	157	158	159	160	161	162	163	164	165	166	167	168	169	170	171	172	173	174	175	176	177	178	179	180	181	
	F	P	E	P	V	T	V	.	S	W	.	.	.	.	N	S	G	A	L	T	S	G	.	V	H	T	F	P	A	V	L	Q	S	.	
rF1 heavy chain rF1 A114C	182	183	184	185	186	187	188	189	190	191	192	193	194	195	196	197	198	199	200	201	202	203	204	205	206	207	208	209	210	211	212	213	214	215	
	S	G	L	Y	S	L	S	S	V	V	T	V	P	S	S	S	L	G	T	.	Q	.	T	Y	I	C	N	V	N	H	K	P	S		
rF1 heavy chain rF1 A114C	216	217	218	219	A	220	221	222	223	A	B	C	224	225	226	227	228	229	230	231	232	233	234	235	236	237	238	239	240						
	N	T	K	V	.	D	K	R	.	.	.	.	.	V	E	P	K	S	C	.	D	.	.	K	T	H	T	C	P						

[illegible]